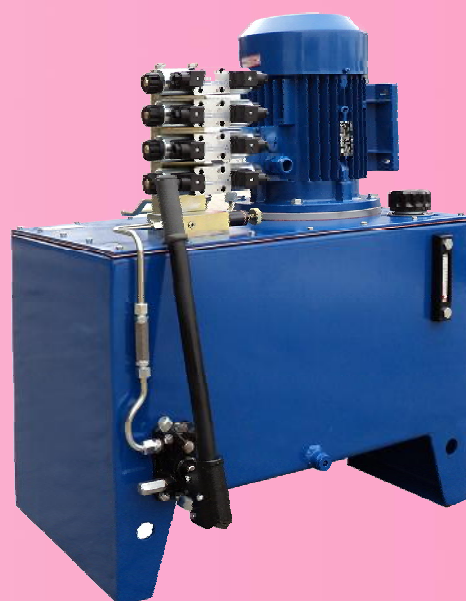




FLUIDOTEHNIK

VRNJAČKA BANJA



HYDRAULIC DEVICES AND SYSTEMS

TEHNICAL DATA



FLUIDOTEHNIC from Vrnjaka Banja established in 1993, is the company which main activities are designing, developing and manufacturing special customized fluid power and lubrication products. Big companies in this branch are not capable to meet consumer needs for piece production of special equipment, otherwise, the most of small companies don't have proper professional team and machinery. Taking advantage of these facts, FLUIDOTEHNIC developed its own program and became a leader in Serbia for these products.

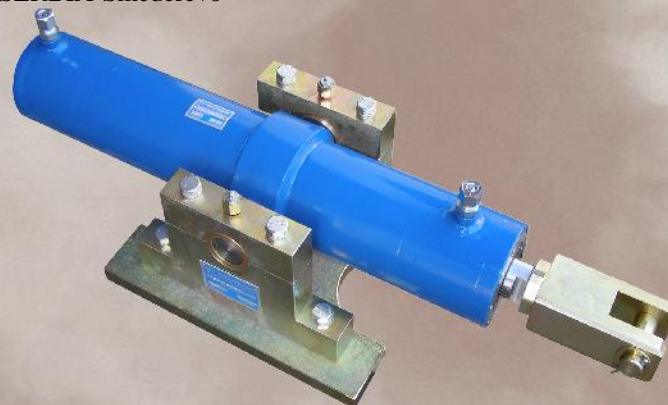
PRODUCTION PROGRAM OF HYDRAULICS

- Jacks with standard and customer requested strokes, with lifting capacity of 6 to 250 tons, working pressure of 500 bar;
- Actuators (hydraulic power units assembled with working cylinder) for working pressure of 160 bar. Various carrying, strokes, speed values, movements (translation and rotation) and pressure levels up to 320 bar are available on customer request;
- Hydraulic presses of 8, 12.5, 20, 30 and 60 tons, with standard and customer requested strokes and speed values;
- Hydraulic components.



Actuator 12T/120 The main purpose of the actuator is for produce force for closing and opening various types of valves and doors.
U.S.STEEL SERBIA-Smederevo

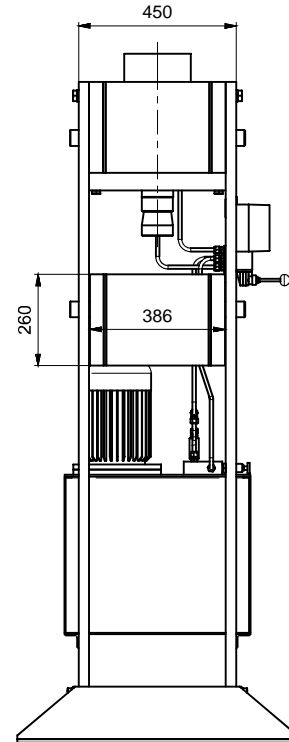
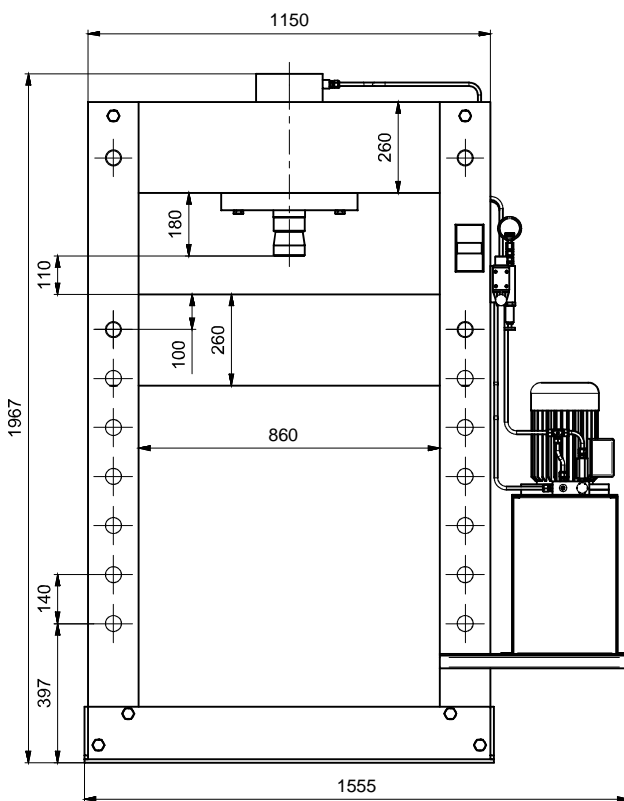
Actuator for oscillating motion
U.S.STEEL SERBIA-Smederevo



HYDRAULIC PRESSES HP-60



Hydraulic presses are applied for assembling and disassembling of various machine parts with tight fit (bushes, bearings, guides . . .), in production plants and service workshops. It's also suitable for deep-rolling of sheet metal and shaft straightening. It's possible processing by deformation of pieces with different dimensions due to changing the position of the working surface by the height and a great piston stroke. Press is a two-stage with the quick approaching stroke and slow-speed crimping stroke. Hand operating distributing valve is used for precisely lowering and return of the piston. Pressing force is adjusted by pressure relief valve (max 300 bar). The presses of various dimensions and pressing forces are available on customer request.



| | |
|------------------------------------|---------------------|
| Ordering code | 15-0200 |
| Crimping force | 60.000 daN |
| Piston stroke | 180 mm |
| Min. height of working space | 110 mm |
| Max. height of working space | 940 mm |
| Electric motor | 1,5kW; 3x400V; 50Hz |
| Pull-out piston speed without load | 5,7 mm/sec |
| Pull-out piston speed with load | 1 mm/sec |
| Pressure in the rapid stroke | 50 bar |
| Crimping pressure | max. 300 bar |
| Max. pressure | 350 bar |
| Fluid mineral oil | Hidrol HD-46 |
| Temperature range | -20 to +50°C |
| Mass | 780 kg |



S E R B I A

36210 VRNJACKA BANJA

Rudjinci 175/A

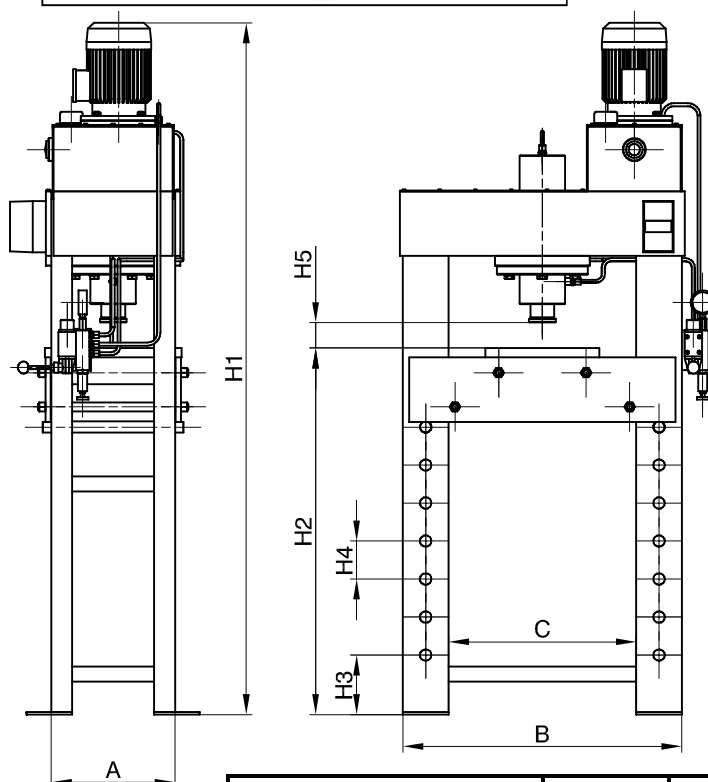
tel/fax: +381 - 36 - 631 - 710
631 - 711

E-mail: office@fluidotehnic.com

HYDRAULIC PRESSES



Hydraulic press is applied in manufacturing plant and service workshops for assembling and disassembling of machine parts with tight fit, such as bearings and bushes. It is also suitable for metal sheet extraction and rod straightening. The working surface can be fixed at different levels depends of dimension of working piece. Hand operating distributing valve is used for precisely lifting and downing of the cylinder rod. Pressing force is adjusted by pressure relief valve (max 160 bar). The presses of various dimensions and pressing forces are available on customer request.



| Code | 15-0100 | 15-0135 | 15-0150 | 15-0180 |
|------|---------|---------|---------|---------|
| A | 325 | | 360 | |
| B | 735 | | 760 | |
| C | 510 | | 520 | |
| H1 | 1820 | | 1980 | |
| H2 | 965 | | 1000 | |
| H3 | 157 | | 288 | |
| H4 | 100 | | 100 | |
| H5 | 68 | | 84 | |

| | | | | |
|--------------------------|-----------------------------|-----------|--------------------------|-----------|
| Ordering code | 15 - 0100 | 15 - 0135 | 15 - 0150 | 15 - 0180 |
| Pressing force | 80 kN | 125 kN | 200 kN | 320 kN |
| Cylinder stroke | 260 mm | | 400 mm | |
| Pressing time | 35 sec | 55 sec | 70 sec | 120 sec |
| Rejecting time | 14 sec | 34 sec | 40 sec | 90 sec |
| Max operating pressure | 160 bar | | | |
| Displacement of the pump | 2,2 dm ³ /min | | 4,0 dm ³ /min | |
| Electric motor | 1,1 kW 380 V 50 Hz 1370 rpm | | | |
| Mineral oil | hidrol HD-46 | | | |
| Tank volume | 10 dm ³ | | 20 dm ³ | |
| Mass | 200 kg | 210 kg | 400 kg | 420 kg |



S E R B I A

36210 VRNJACKA BANJA

Rudjinci 175/A

tel/fax: +381 - 36 - 631 - 710
631 - 711

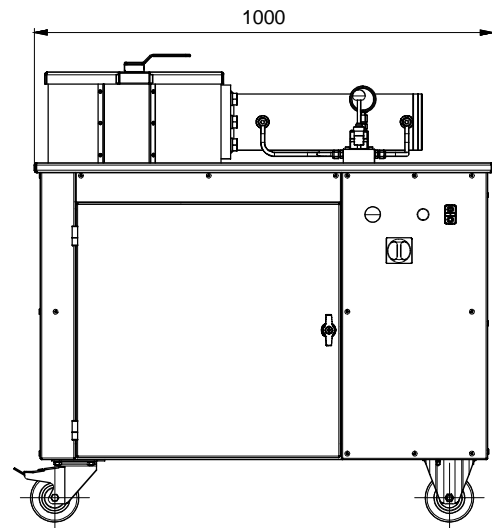
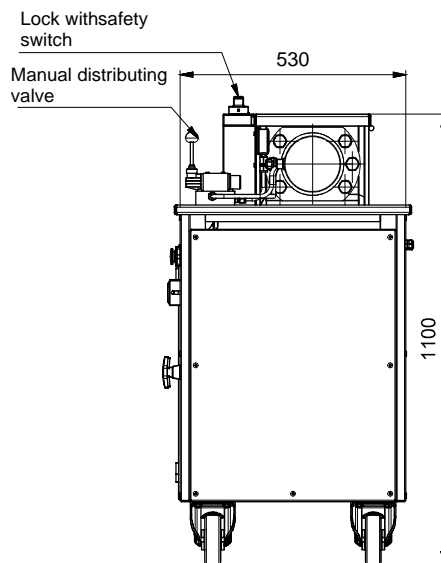
E-mail : office@fluidotehnic.com

HYDRAULIC PRESS (FOR PRESSING OIL FILTERS)

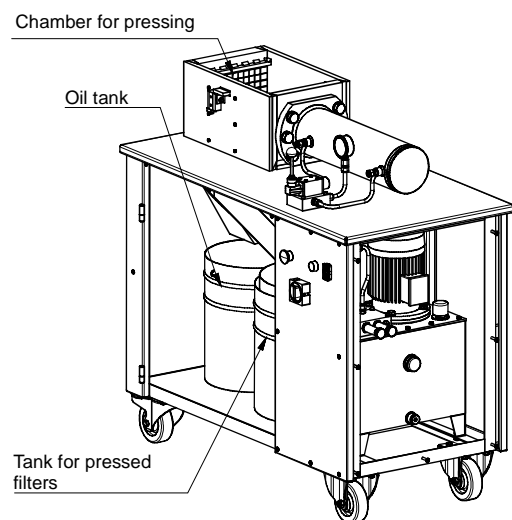


Hydraulic press 90-2550 is applied for the recycling of used and worn-out cartridges and oil-filters, motor vehicles, mining and construction machines. In each filter, depending on the size and type, remain 0,5 to 3 lit. of used oil. Press separates the remaining oil from the filter and ensures environmental protection in accordance with the requirements of ISO 14001. The oil was separated by pressing in one vessel, the pressed filters in the second and thus hazardous waste is separated from non-hazardous waste. Depending on the filter size, in one cycle can be crimped one to two filters. Crimping chamber is closed and secured with a safety lock. The maximum capacity of the press is 40 to 120 filters/working hour.

The presses of various dimensions, capacity and automation level are available on customer request.



| | | |
|-----------------------------------|-------------------|-------------|
| Ordering code | 90-2550 | |
| Crimping force | 20.000 daN | |
| Dimensions of compress. chamber | 170x250x300 mm | |
| Piston stroke | 300 mm | |
| Rapid stroke | 800 mm/min | |
| Slow-speed stroke | 200 mm/min | |
| Pressure in the rapid stroke | 50 bar | |
| Pressure in the slow-speed stroke | 160 bar | |
| Fluid mineral oil | Hidrol HD-46 | |
| Temperature range | -10 to +50oC | |
| Electric motor | power | 1,5kW |
| | voltage | 400V / 50Hz |
| | rpm | 1370 rpm |
| Max. capacity | 40; 120 filters/h | |
| Mass | 325 kg | |



S E R B I A
36210 VRNJACKA BANJA
Rudjinci 175/A
tel/fax: +381 - 36 - 631 - 710
631 - 711
E-mail: office@fluidotehnic.com

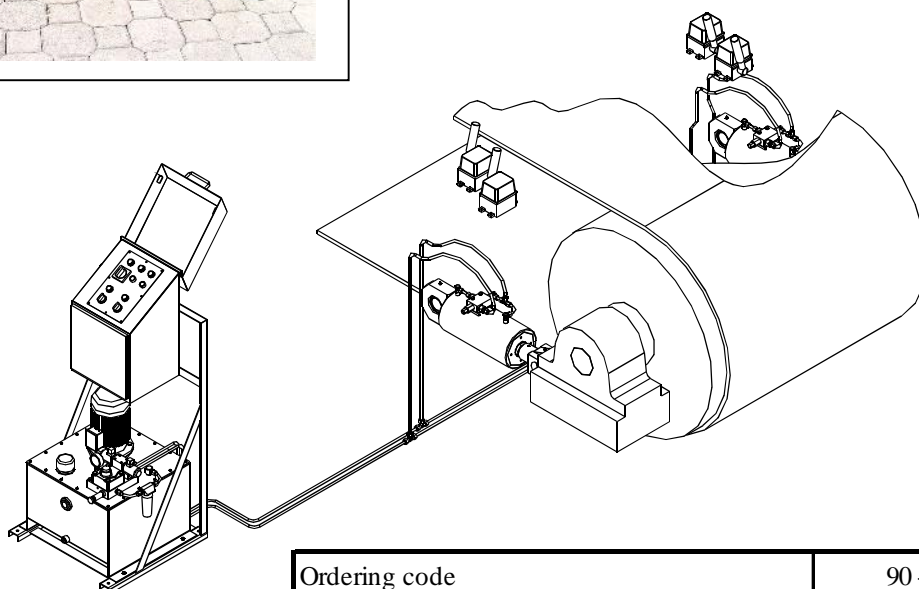
ACTUATOR FOR THE CORRECTION OF CONVEYORS LATERAL DEFLECTION



Actuator 90-0250 is applied for automatic correction of lateral deflection of the conveyors. The hydraulic cylinders swivel the band roller according to the signal from proximity detectors and keep the band in proper position. Control valve block assembled directly on the cylinder prevents the creep movements.

The speed and sensitivity of the cylinders can be adjusting by changing the pump flow. In the same way it is possible to adjust the band tension without additional balance weights.

The actuators of various characteristics are available on customer request.



| | | |
|-------------------------------------|---------|-------------------------------|
| Ordering code | | 90 - 0250 |
| Maximum operating pressure | | 160 bar |
| Mineral oil | | HIDROL HD-46 |
| Working temperature | | - 20 ; +50°C |
| Tank volume | | 50 dm ³ |
| Flow rate | | 0 do 3,8 dm ³ /min |
| Cylinder stroke | | 200 mm |
| Cylinder force for maximum pressure | | 32 000/26 000 daN |
| Electric motor | Power | 1,5 kW |
| | Voltage | 380 V/50 Hz |
| | speed | 1405 rpm |
| Mass | | 285 kg |



S E R B I A

36210 VRNJACKA BANJA

Rudjinci 175/A

tel/fax: +381 - 36 - 631 - 710
631 - 711

E-mail: office@fluidotehnic.com

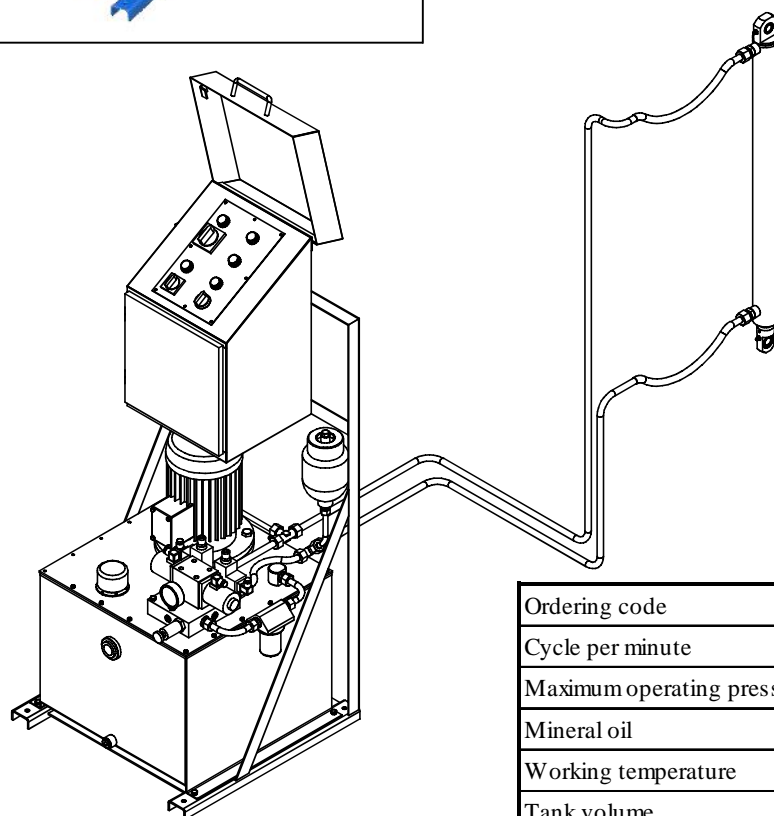
ACTUATOR FOR OSCILLATING MOTION



Actuator 90-0300 is applied oscillating motion with fixed amplitude according to the cylinder stroke. Movement of the cylinder rod can be continual or with a pause at the end position. Changing direction of the movement carried out without proximity switches so the device is insensitive of the dust and humidity.

End position cushioning of the hydraulic cylinders and hydraulic accumulator provide smooth operation of the system.

The actuators of various characteristics are available on customer request



| | | |
|-------------------------------------|-------------------------|-------------|
| Ordering code | 90 - 0300 | |
| Cycle per minute | 3,6 ; 9 | |
| Maximum operating pressure | 60 bar | |
| Mineral oil | HIDROL HD-46 | |
| Working temperature | - 20 ; +50°C | |
| Tank volume | 80 dm ³ | |
| Flow rate | 22 dm ³ /min | |
| Cylinder stroke | 750 mm | |
| Cylinder force for maximum pressure | 1 000/700 daN | |
| Electric motor | Power | 3 kW |
| | Voltage | 380 V/50 Hz |
| | speed | 1420 rpm |
| Mass | 170 kg | |



S E R B I A

36210 VRNJACKA BANJA

Rudjinci 175/A

tel/fax: +381 - 36 - 631 - 710
631 - 711

E-mail : office@fluidotehnic.com

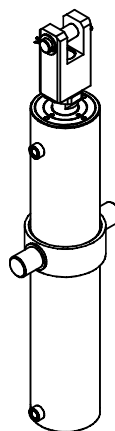
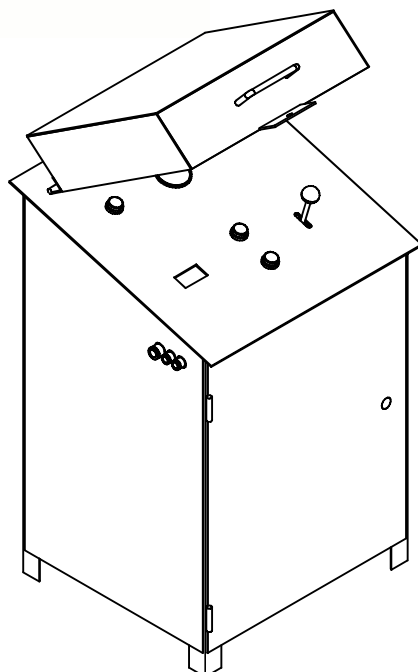
ACTUATOR 12T/120



The main purpose of the actuator is for produce force for closing and opening various types of valves and doors.

Hand operated hydraulic distributing valve is used for the controlling of the device. Version with solenoid valve is also available on the customer request.

Installation dimensions and configuration of the system are customized under customer request. Actuators with various characteristics are available on customer request.



| | | | |
|-------------------------------------|---------|---------------------------|------------------|
| Ordering code | | 90 - 0120 | 90 - 0120/1 |
| Maximum operating pressure | | 100 bar | 130 bar |
| Mineral oil | | HIDROL HD-46 | |
| Working temperature | | - 20 ; +50 ⁰ C | |
| Tank volume | | 20 dm ³ | |
| Flow rate | | 6,3 dm ³ /min | |
| Cylinder stroke | | 500 mm | |
| Cylinder force for maximum pressure | | 7 800/6 200 daN | 10 200/8 100 daN |
| Electric motor | Power | 1,1 kW | 1,5 kW |
| | Voltage | 380 V/50 Hz | |
| | speed | 1410 rpm | 1405 rpm |
| Mass | | 135 kg | 140 kg |



S E R B I A

36210 VRNJACKA BANJA

Rudjinci 175/A

tel/fax: +381 - 36 - 631 - 710
631 - 711

E-mail : office@fluidotehnic.com

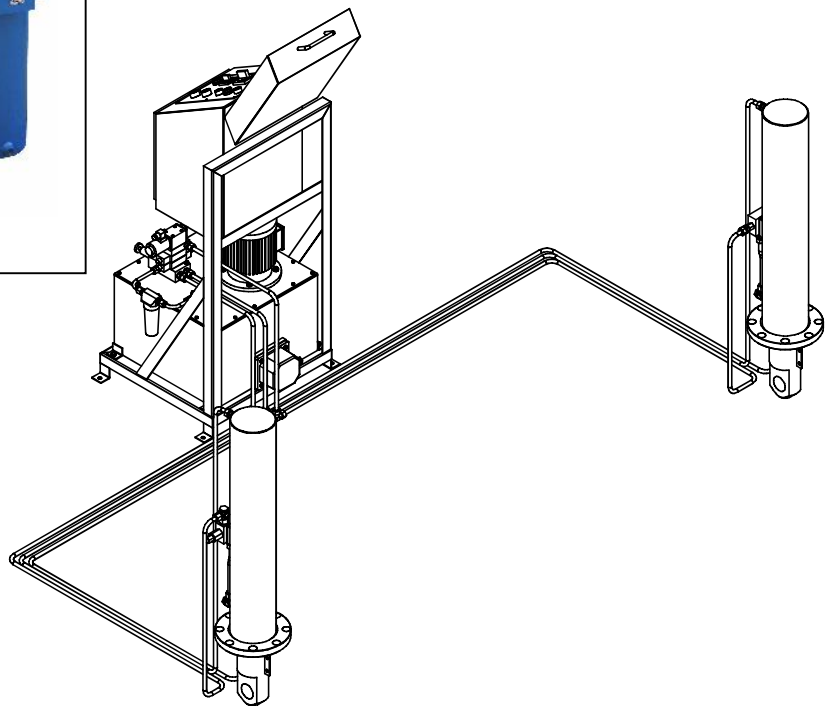
TANDEM ACTUATOR



Tandem actuator is applied for synchronized lifting and downing of the cargo and holding it on the requested level. Speed of the cylinders movement is adjustable and independent of the load. Versions with manually and electric remote control are available. Automatic control with level indicator is available on customer request.

For low temperature operation device is equipped with heater and thermal switch.

Installation dimensions, load capacity, speed, and stroke of the cylinder are customized under customer request.



| | | |
|-------------------------------------|---------|----------------------------|
| Ordering code | | 90 - 0210 |
| Maximum operating pressure | | 140 bar |
| Mineral oil | | HIDROL HD-46 |
| Working temperature | | - 30 ; +50 ⁰ C |
| Tank volume | | 45 dm ³ |
| Flow rate | | 2,4 dm ³ /min |
| Cylinder stroke | | 650 mm |
| Cylinder force for maximum pressure | | 2x17 000/2x13 000 daN |
| Electric motor | Power | 1,1 kW |
| | Voltage | 380 V/50 Hz |
| | speed | 1370 rpm |
| Oil heater | | 220 V, 1000 W |
| Thermostat | | - 30 do +30 ⁰ C |
| Mass | | 270 kg |



S E R B I A

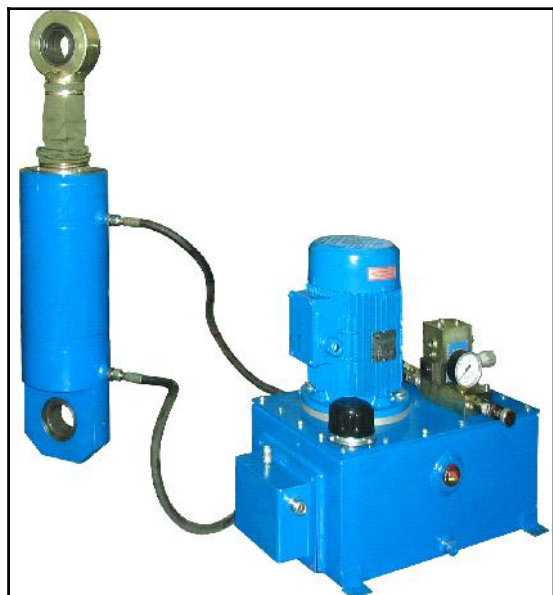
36210 VRNJACKA BANJA

Rudjinci 175/A

tel/fax: +381 - 36 - 631 - 710
631 - 711

E-mail: office@fluidotehnic.com

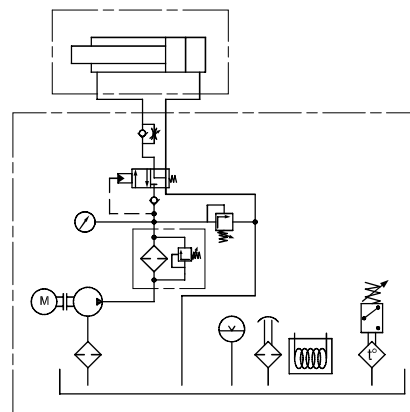
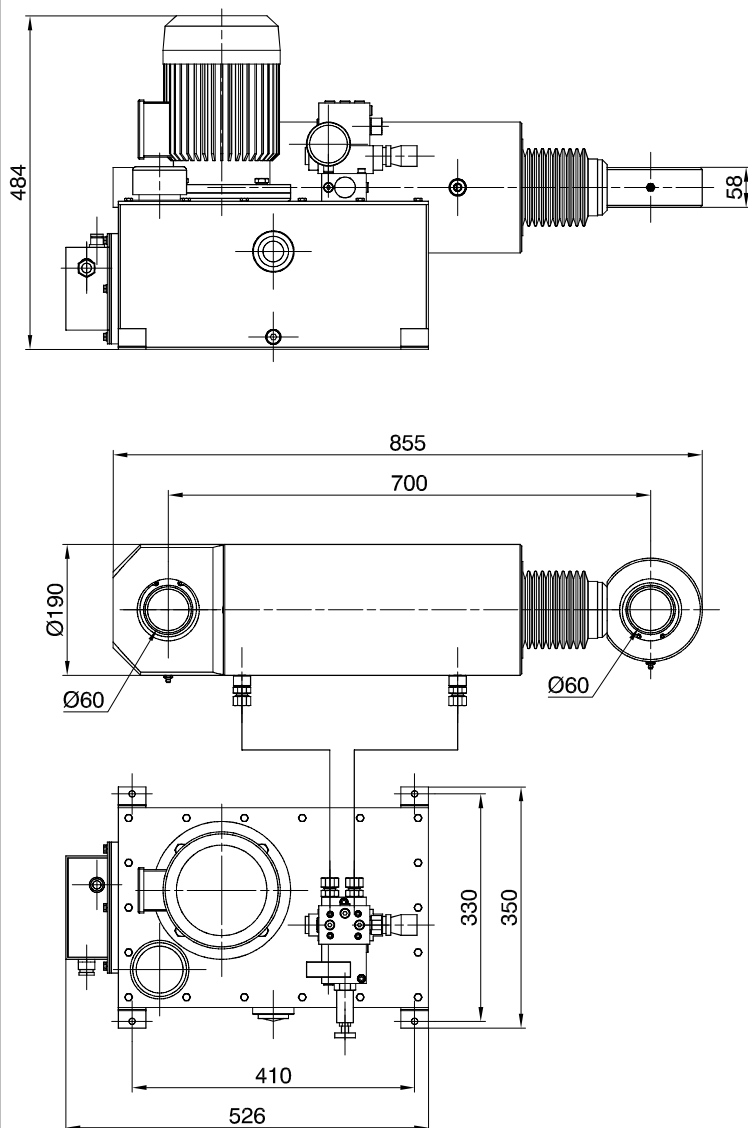
RAIL CATCHER ACTUATOR 15T/220



Actuator is mainly used for produce great breaking forces to anchoring big cranes. Hydraulic power unit with gear pump is assembled in the robust housing. After the starting electric motor of the power unit and switching on the valve solenoid, oil flows to the front side of the hydraulic cylinder. Retracting force of the cylinder overcomes the spring force of the breaking mechanism. The crane is ready to move. Limitation of the releasing force is carried out by the adjusting pressure on the pressure relief valve. It is recommended to adjust releasing force 15 to 20% over the spring force. To prevent damage of the device, do not adjust the releasing pressure over the maximum permissible value. After the switching of the electric motor and valve solenoid, spring force moves the cylinder rod to the start position. The crane is anchored. Breaking speed can be adjusted by check throttle valve. Down direction increase the speed.

The swinging bearing is mounted at the end of the cylinder rod. For low temperature operation device is equipped with heater.

Actuators of other dimensions and characteristics are available on customer request.



| | | |
|--|---------------|-------------------------|
| Ordering code | | 15T/220 |
| Inserting force on the rod | | max. 160kN |
| Piston stroke | | 220mm |
| Retract rod speed | | 6,06mm/s |
| Retract rod time | | podešava se |
| Pump | flow | 6,0dm ³ /min |
| | work pressure | max. 100bar |
| Mineral hydraulic oil | | Shell Tellus* Arctic 32 |
| Tank volume | | 20dm ³ |
| Electromotor | | 1,5kW; 400V; 50Hz |
| Oil heater | | 220V; 500W |
| Thermostat | | 0 do +40°C |
| Ambient temperature* | | -40 do +50°C |
| Mass | | 136kg |
| * Min. temperature without oil preheating is -15°C | | |



SERBIA

36210 VRNJACKA BANJA

Rudjinci 175/A

tel/fax: +381 - 36 - 631 - 710
631 - 711

E-mail: office@fluidotehnic.com

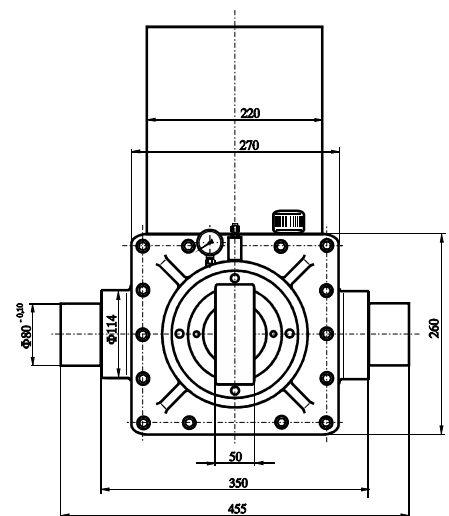
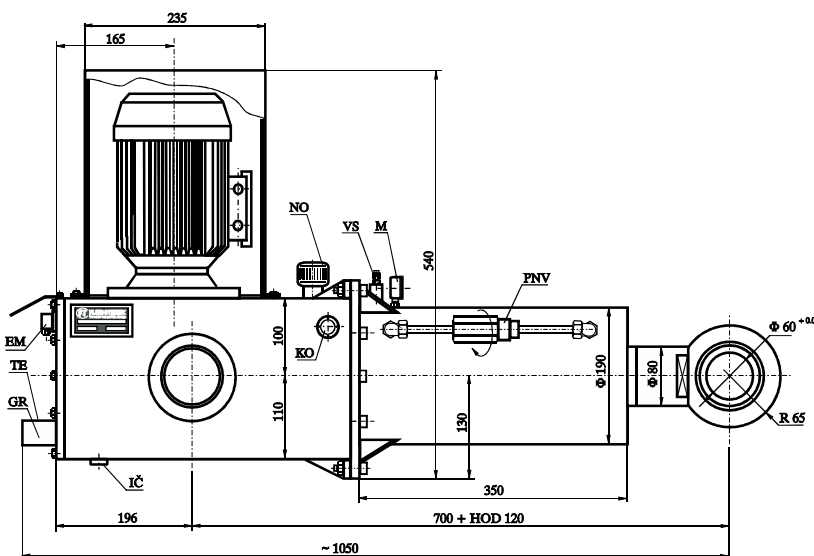
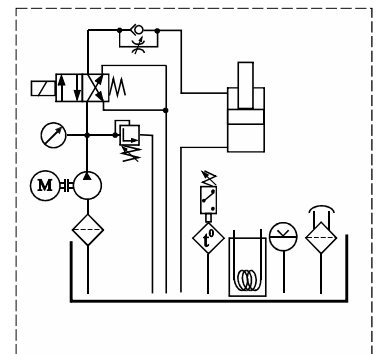
AKTUATOR 9T/120 ELECTROHYDRAULIC RELEASING DEVICE



Actuator is mainly used for produce great breaking forces to anchoring big cranes. Hydraulic power unit with gear pump is assembled in the robust housing. After the starting electric motor of the power unit and switching on the valve solenoid, oil flows to the front side of the hydraulic cylinder. Retracting force of the cylinder overcomes the spring force of the breaking mechanism. The crane is ready to move. Limitation of the releasing force is carried out by the adjusting pressure on the pressure relief valve. It is recommended to adjust releasing force 15 to 20% over the spring force. To prevent damage of the device, do not adjust the releasing pressure over the maximum permissible value. After the switching of the electric motor and valve solenoid, spring force moves the cylinder rod to the start position. The crane is anchored. Breaking speed can be adjusted by check throttle valve. Down direction increase the speed. The swinging bearing is mounted at the end of the cylinder rod. For low temperature operation device is equipped with heater. Actuators of other dimensions and characteristics are available on customer request.

| | |
|---|--------------------------|
| Ordering code | 9T/120.000 |
| Retracting force | max. 120 KN |
| Stroke | 120 mm |
| Retracting time | 17s |
| Ejecting time adjusting | 6 to 60s |
| Pump | Flow rate |
| | 6,3 dm ³ /min |
| | Operating pressure |
| | max. 80 bar |
| Mineral oil | ISO VG 46 |
| Tank volume | 16 dm ³ |
| Power | 1,1 KW |
| Electric motor voltage | 400 V 50 Hz |
| Electric motor speed | 1370 o/min |
| Solenoid valve | 220 V 50 Hz 0,13 A |
| Oil heater | 220 V 500 W |
| Thermostat | 0 ; +50 °C |
| Environment temperature * | -40 ; +50 °C |
| Mass | 180 kg |
| * Minimal temperature without heating is -15 °C | |

EM Solenoid connector
 TE Thermostat
 G R Heater
 NO Oil filling port
 VS Pressure relief
 M Pressure gauge
 KO Oil level indicator
 I^ Oil drain plug
 PNV Check throttle valve



SERBIA
 36210 VRNJACKA BANJA
 Rudjinci 175/A
 tel/fax: +381 - 36 - 631 - 710
 631 - 711
 E-mail : office@fluidotehnic.com

HYDRAULIC POWER PACKS



Hydraulic power packs

Hydraulic power units are drive aggregates that electrical energy converts to hydraulic and so, over cylinder and hydro-motor, perform corresponding mechanical linear or rotational work.

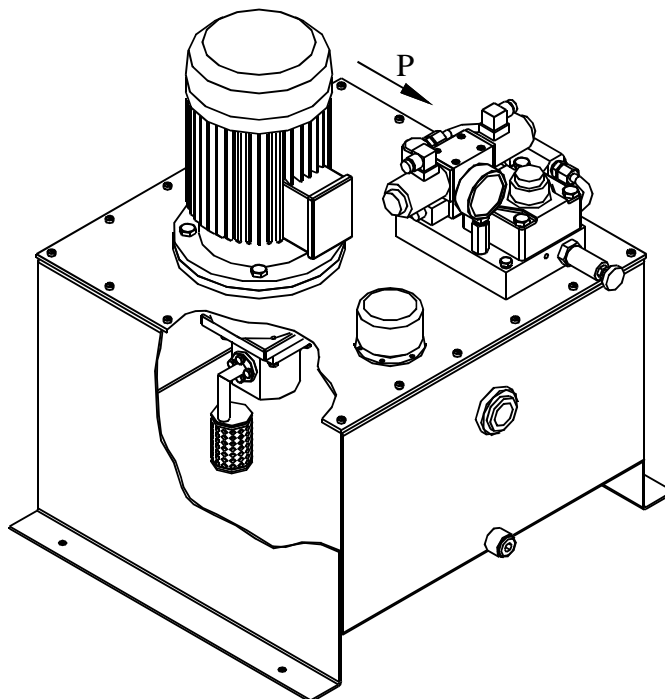
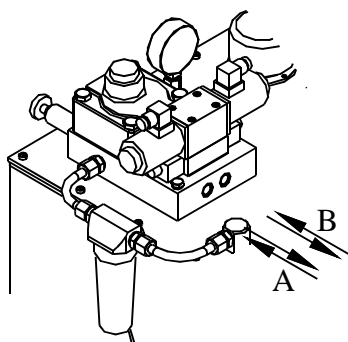
Hydraulic power units are designed as a compact unit consisting of:

- Reservoir
- Electric motor coupled with hydraulic pump
- Suction filter
- Pressure line filter
- Safety valve
- Visual fluids level indicator
- Filling plug with air filter

Types and nominal sizes of components are chosen according to the required technical characteristics of aggregates.

On the customer request power units with additional drive and control elements are available, such as: valves (flow and pressure control, check valves, distributing valves) single mounting or composed in blocks, hydraulic accumulators, oil level indicators, temperature electric indicators, heaters, coolers etc.

VIEW "P"

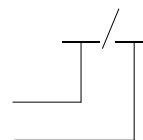


| | |
|------------------------|--------------------------------|
| Max operating pressure | 160 (300) bar * |
| Mineral oil viscosity | 10 - 400 mm ² /s |
| Operating temperature | - 20 ; +50°C |
| Tank volume | 20 - 250 dm ³ |
| Pump displacement | up to 160 dm ³ /min |

* 160 bar Gear pumps
300 bar Piston pumps

ORDERING CODE

Operating pressure
Pump displacement



S E R B I A

36210 VRNJACKA BANJA

Rudjinci 175/A

tel/fax: +381 - 36 - 631 - 710
631 - 711

E-mail: office@fluidotehnic.com

HYDRAULIC CYLINDERS



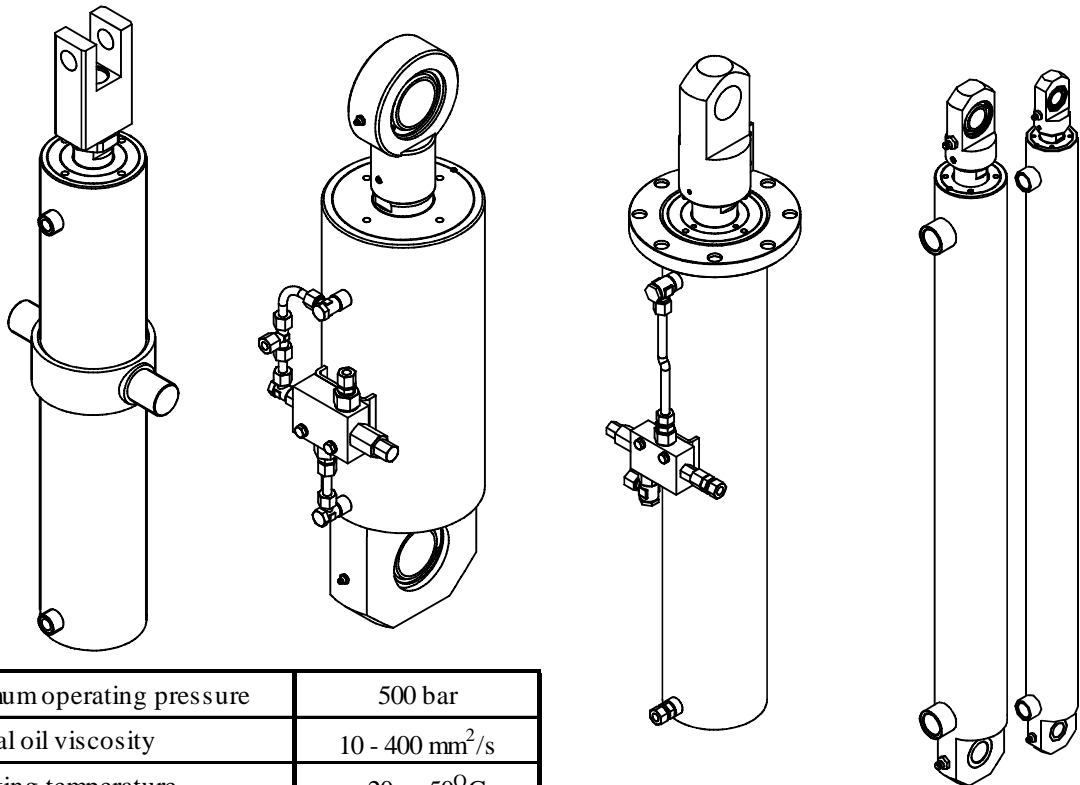
The Fluidotehnic range of hydraulic cylinders meets the most advanced requirements for operation in very hard working conditions such as in surface exploitation plants, mines, iron plants, cokery plants, foundries, cement works and construction machinery.

Different construction options are available such as single and double acting cylinders, with or without stroke-end cushioning, and plungers.

Hydraulic cylinders by Fluidotehnic are of reliable technical solution, high precisely treatment of the parts, high quality heat treatment and surface processing.

The cylinder rods are made of hardened and tempered carbon steel, one or multi layer chromed, depends of application and customer request.

Proper and high quality seals provide low friction and long time exploitation.



| | |
|----------------------------|-----------------------------|
| Maximum operating pressure | 500 bar |
| Mineral oil viscosity | 10 - 400 mm ² /s |
| Operating temperature | - 20 ; +50°C |
| Piston diameter | 25 - 250 mm |
| Stroke | up to 2 000 mm |
| Speed | max 0,5 m/s |
| Load direction | Along cylinder axis |
| Assembling position | Any position |

Ordering code:

Piston diameter ———— / ———— X ————
 Rod diameter ————
 Stroke ————



S E R B I A

36210 VRNJACKA BANJA

Rudjinci 175/A

tel/fax: +381 - 36 - 631 - 710
631 - 711

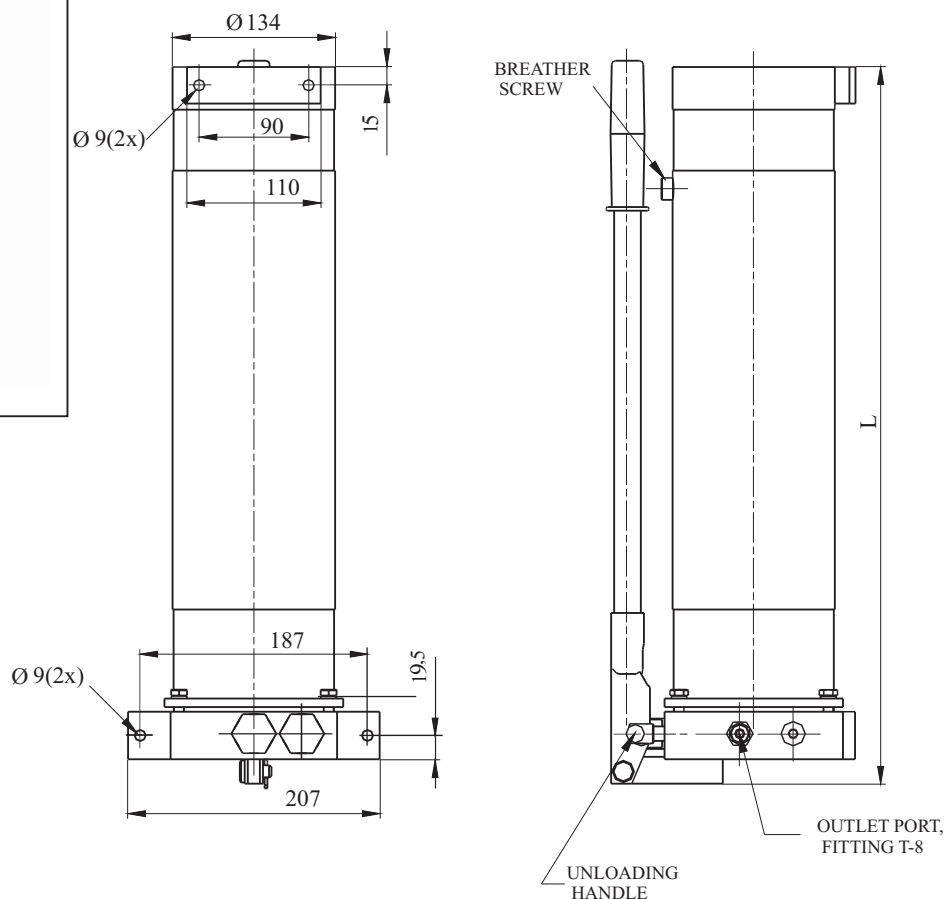
E-mail: office@fluidotehnic.com

SINGLE ACTING HAND PUMP



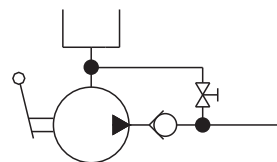
Hand pump operates in combination with single acting cylinder. High-pressure hose of 3 m length is included in delivery. Cylinder has to be ordered separately. Robust design, high precisely part treatment, high quality seals provide long time exploitation of the hand pump.

Delivered pump is filled with oil and ready for use. Before use release the breather screw and retight the unloading handle.



| | | |
|------------------------------------|-------------------------------|-----------------------------|
| Ordering code | 10-8300 | 10-8300/1 |
| Mineral oil | Viscosity | 20 - 400 mm ² /s |
| | Temperature | -20 ; +80 °C |
| Adjusted pressure of relief valves | 500/105 bar | |
| Flow | 3,4/15 cm ³ /cycle | |
| Lever force for maximum pressure | 60 daN | |
| Length L | 588 | 388 |
| Tank volume | 6 dm ³ | 3,5 dm ³ |
| Mass | 24 kg | 21 kg |

SYMBOL



S E R B I A

36210 VRNJACKA BANJA

Rudjinci 175/A

tel/fax:

+381 - 36 - 631 - 710

631 - 711

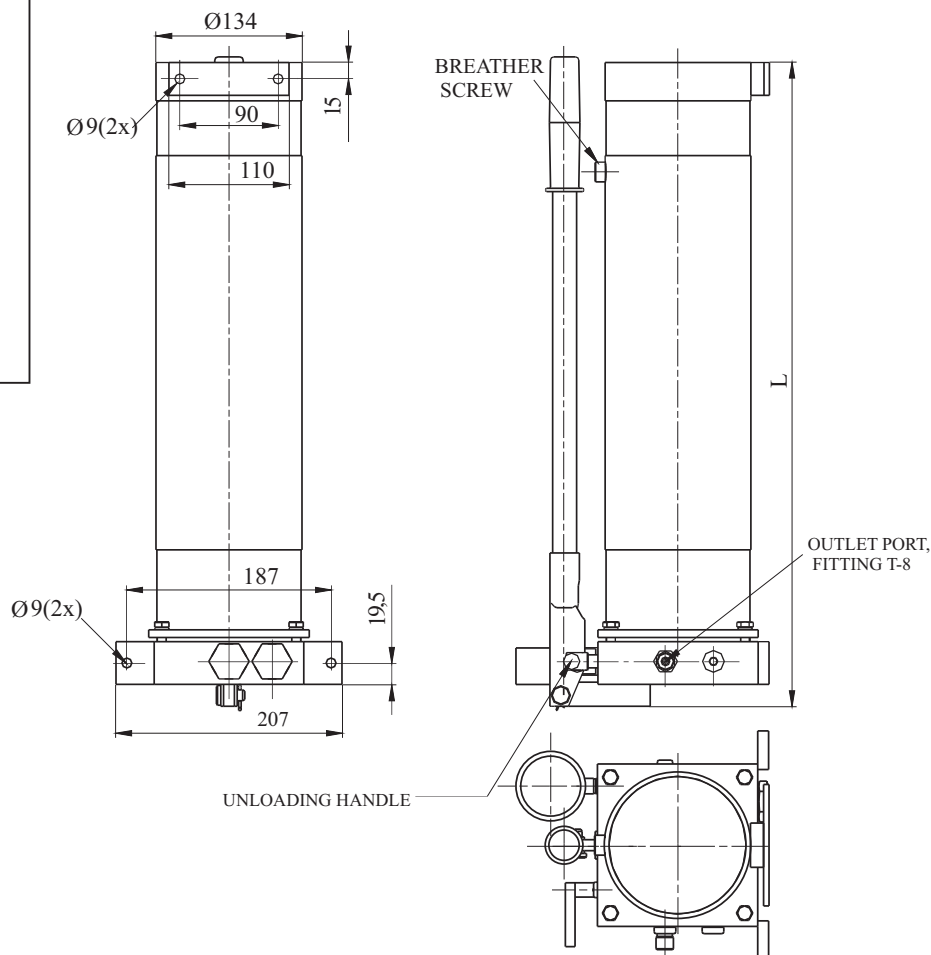
E-mail : office@fluidotehnic.com

SINGLE ACTING HAND PUMP WITH MANOMETER



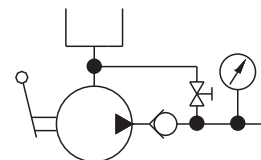
Hand pump operates in combination with single acting cylinder. High-pressure hose of 3 m length is included in delivery. Cylinder has to be ordered separately. Robust design, high precisely part treatment, high quality seals provide long time exploitation of the hand pump.

Delivered pump is filled with oil and ready for use. Before use release the breather screw and retight the unloading handle.



| | | |
|------------------------------------|-------------------------------|------------------------------|
| Ordering code | 10-8300 M | 10-8300/1 M |
| Mineral oil | Viscosity | 20 do 400 mm ² /s |
| | Temperature | -20 ; +80 °C |
| Adjusted pressure of relief valves | 500/105 bar | |
| Flow | 3,4/15 cm ³ /cycle | |
| Lever force for maximum pressure | 60 daN | |
| Length L | 588 | 388 |
| Tank volume | 6 dm ³ | 3,5 dm ³ |
| Mass | 24 kg | 21 kg |

SYMBOL



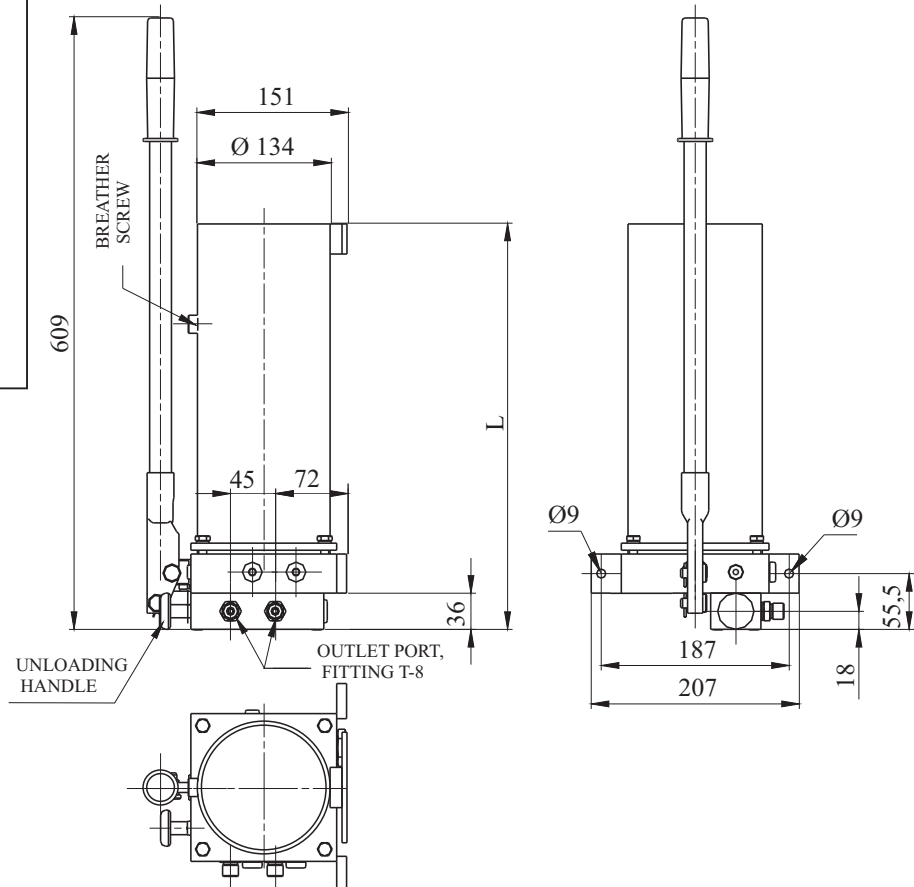
SERBIA
 36210 VRNJACKA BANJA
 Rudjinci 175/A
 tel/fax: +381 - 36 - 631 - 710
 631 - 711
 E-mail: office@fluidotehnic.com

HAND PUMP DOUBLE ACTING



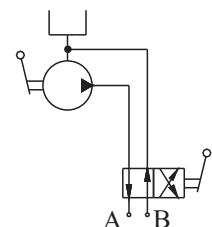
Hand pump operates in combination with double acting cylinder. High-pressure hose of 3 m length is included in delivery. Cylinder has to be ordered separately. Robust design, high precisely part treatment, high quality seals provide long time exploitation of the hand pump.

Delivered pump is filled with oil and ready for use. Before use release the breather screw and retight the unloading handle.



| | | |
|------------------------------------|-------------------|-------------------------------|
| Ordering code | 10-8350 | 10-8350/1 |
| Mineral oil | Viscosity | 20 - 400 mm ² /s |
| | Temperature | -20 ; +80 °C |
| Adjusted pressure of relief valves | | 500/105 bar |
| Flow | | 3,4/15 cm ³ /cycle |
| Lever force for maximum pressure | | 60 daN |
| Length L | 588 | 388 |
| Tank volume | 6 dm ³ | 3,5 dm ³ |
| Mass | 25 kg | 22 kg |

SYMBOL



S E R B I A

36210 VRNJACKA BANJA

Rudjinci 175/A

tel/fax: +381 - 36 - 631 - 710
631 - 711

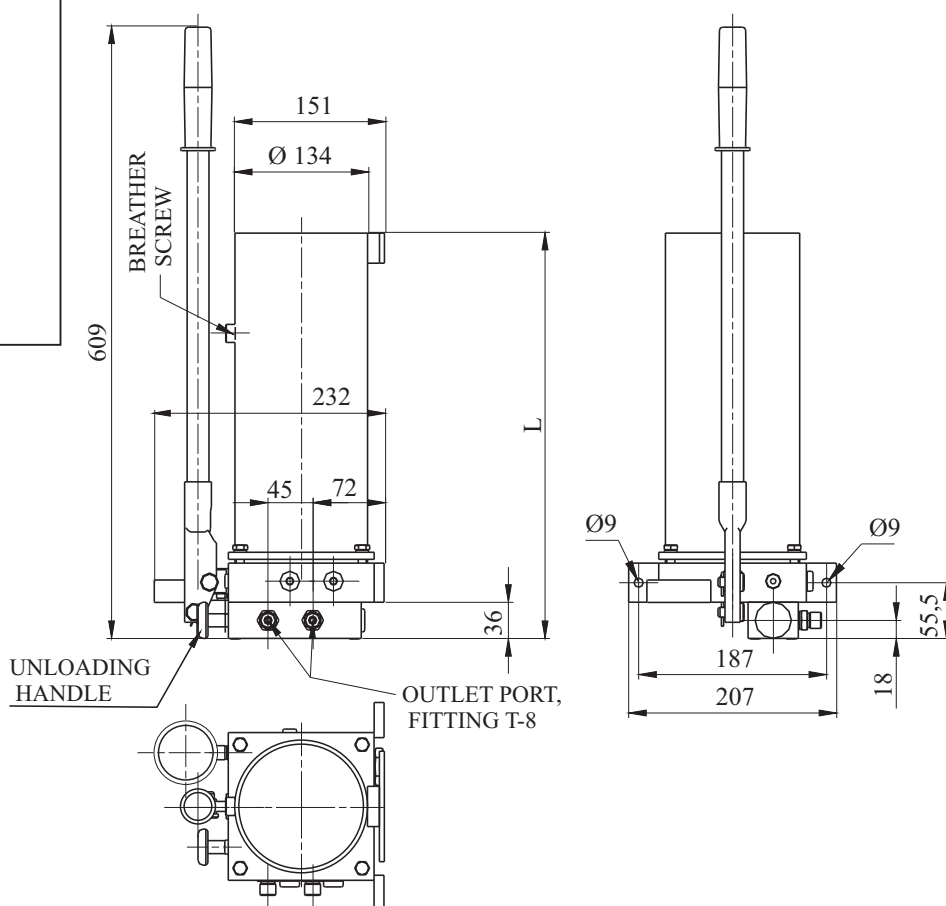
E-mail: office@fluidotehnic.com

HAND PUMP DOUBLE ACTING WITH MANOMETER



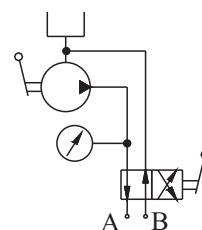
Hand pump operates in combination with double acting cylinder. High-pressure hose of 3 m length is included in delivery. Cylinder has to be ordered separately. Robust design, high precisely part treatment, high quality seals provide long time exploitation of the hand pump.

Delivered pump is filled with oil and ready for use. Before use release the breather screw and retight the unloading handle.



| | | |
|------------------------------------|---------------------------------------|---------------------|
| Ordering code | 10-8350 M | 10-8350/1 M |
| Mineral oil | Viscosity 20 ; 400 mm ² /s | |
| | Temperature -20 do +80 °C | |
| Adjusted pressure of relief valves | 500/105 bar | |
| Flow | 3,4/15 cm ³ /cyce | |
| Lever force for maximum pressure | 60 daN | |
| Length L | 588 | 388 |
| Tank volume | 6 dm ³ | 3,5 dm ³ |
| Mass | 25 kg | 22 kg |

SYMBOL



SERBIA
 36210 VRNJACKA BANJA
 Rudjinci 175/A
 tel/fax: +381 - 36 - 631 - 710
 631 - 711
 E-mail : office@fluidotehnic.com

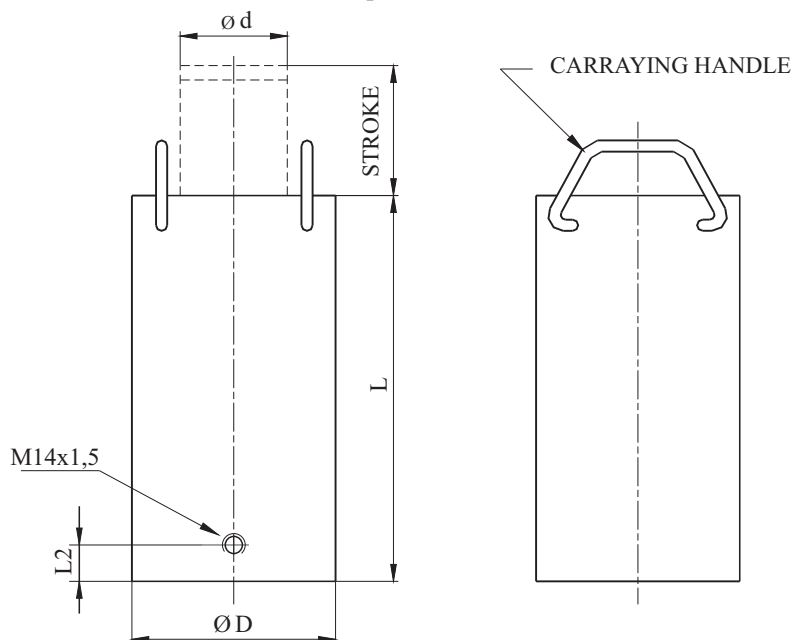
SINGLE ACTING LIFTING CYLINDER



It is applied for cargo lifting. Robust design, high precisely part treatment, high quality seals provide long time exploitation of the cylinder.

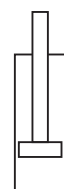
Rejecting movement of the cylinder is achieved by means of the external force (load).

Various values of the load capacity and strokes are available on customer request.



| Type | Load capacity (daN) | Stroke | D | d | L | L2 | Mass (kg) |
|------------|------------------------|--------|-----|-----|-----|----|--------------|
| (mm) | | | | | | | |
| JC 6/65 | 6.300 | 65 | 60 | 30 | 140 | 30 | 3,4 |
| JC 10/65 | 9.800 | 65 | 70 | 40 | 185 | 30 | 5,6 |
| JC 16/65 | 15.600 | 65 | 85 | 45 | 197 | 30 | 8,7 |
| JC 25/65 | 25.100 | 65 | 110 | 45 | 235 | 40 | 15,1 |
| JC 25/100 | 25.100 | 100 | 110 | 50 | 270 | 40 | 17,9 |
| JC 40/65 | 39.200 | 65 | 135 | 75 | 245 | 40 | 23,6 |
| JC 40/100 | 39.200 | 100 | 135 | 75 | 280 | 40 | 25,2 |
| JC 60/65 | 61.300 | 65 | 155 | 85 | 250 | 40 | 37,2 |
| JC 60/150 | 61.300 | 150 | 155 | 85 | 335 | 40 | 41,3 |
| JC 80/65 | 76.900 | 65 | 165 | 95 | 255 | 40 | 38,3 |
| JC 80/150 | 76.900 | 150 | 165 | 95 | 340 | 40 | 39,7 |
| JC 100/65 | 100.500 | 65 | 195 | 105 | 255 | 40 | 48,5 |
| JC 100/200 | 100.500 | 200 | 195 | 105 | 390 | 40 | 66,2 |
| JC 160/100 | 157.000 | 100 | 240 | 145 | 290 | 50 | 86,7 |
| JC 200/100 | 198.700 | 100 | 270 | 175 | 300 | 50 | 98,8 |
| JC 250/100 | 245.300 | 100 | 300 | 200 | 312 | 50 | 125 |

SYMBOL



| | | |
|----------------------|-------------|------------------------------|
| Fluid | mineral oil | |
| | viscosity | 20 do 400 mm ² /s |
| | temperature | -20 do +80 °C |
| Working pressure max | | 500 bar |
| Piston speed | | max 0,01 m/s |
| Load direction | | along the cylinder axis |



S E R B I A

36210 VRNJACKA BANJA

Rudjinci 175/A

tel/fax: +381 - 36 - 631 - 710
631 - 711

E-mail: office@fluidotehnic.com

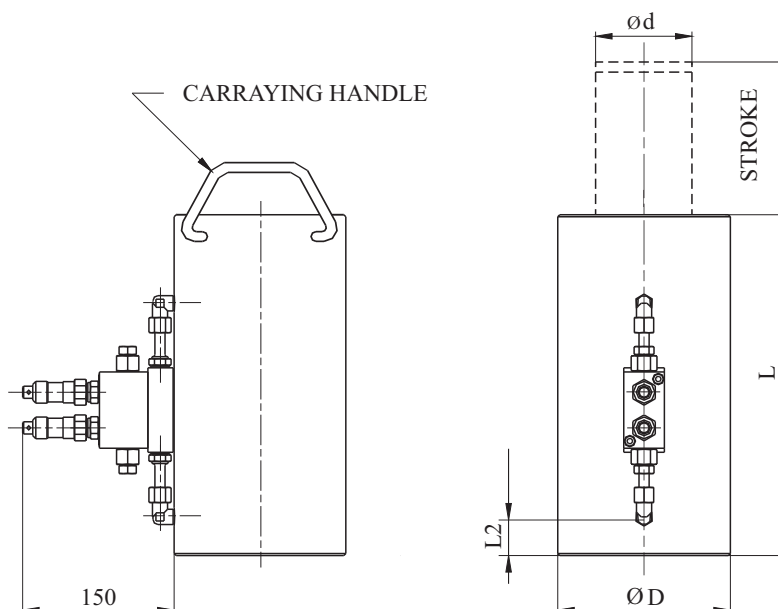
DOUBLE ACTING LIFTING CYLINDER



It is applied for cargo lifting. Robust design, high precisely part treatment, high quality seals provide long time exploitation of the cylinder.

Rejecting movement of the cylinder is achieved by means of the external force (load).

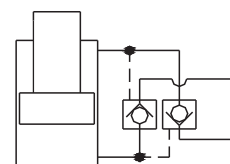
Various values of the load capacity and strokes are available on customer request.



| Type | Load capacity (daN) | Stroke | D | d | L | L2 | Mass (kg) |
|------------|------------------------|--------|-----|-----|-----|----|--------------|
| (mm) | | | | | | | |
| DC 25/65 | 25.100 | 65 | 110 | 45 | 235 | 40 | 17,6 |
| DC 25/100 | 25.100 | 100 | 110 | 50 | 270 | 40 | 20,4 |
| DC 40/65 | 39.200 | 65 | 135 | 75 | 245 | 40 | 26,1 |
| DC 40/100 | 39.200 | 100 | 135 | 75 | 280 | 40 | 27,7 |
| DC 60/65 | 61.300 | 65 | 155 | 85 | 250 | 40 | 39,7 |
| DC 60/150 | 61.300 | 150 | 155 | 85 | 335 | 40 | 43,8 |
| DC 80/65 | 76.900 | 65 | 165 | 95 | 255 | 40 | 42,1 |
| DC 80/150 | 76.900 | 150 | 165 | 95 | 340 | 40 | 43,4 |
| DC 100/65 | 100.500 | 65 | 195 | 105 | 255 | 40 | 52,2 |
| DC 100/200 | 100.500 | 200 | 195 | 105 | 390 | 40 | 69,9 |
| DC 160/100 | 157.000 | 100 | 240 | 145 | 290 | 50 | 90,4 |
| DC 200/100 | 198.700 | 100 | 270 | 175 | 300 | 50 | 102,5 |
| DC 250/100 | 245.300 | 100 | 300 | 200 | 312 | 50 | 128,7 |

| | | |
|----------------------|-------------|------------------------------|
| Fluid | mineral oil | |
| | viscosity | 20 do 400 mm ² /s |
| | temperature | -20 do +80 °C |
| Working pressure max | | 500 bar |
| Piston speed | | max 0,01 m/s |
| Load direction | | along the cylinder axis |

SYMBOL



FLUIDOTEHNIC

S E R B I A

36210 VRNJACKA BANJA

Rudjinci 175/A

tel/fax: +381 - 36 - 631 - 710
631 - 711

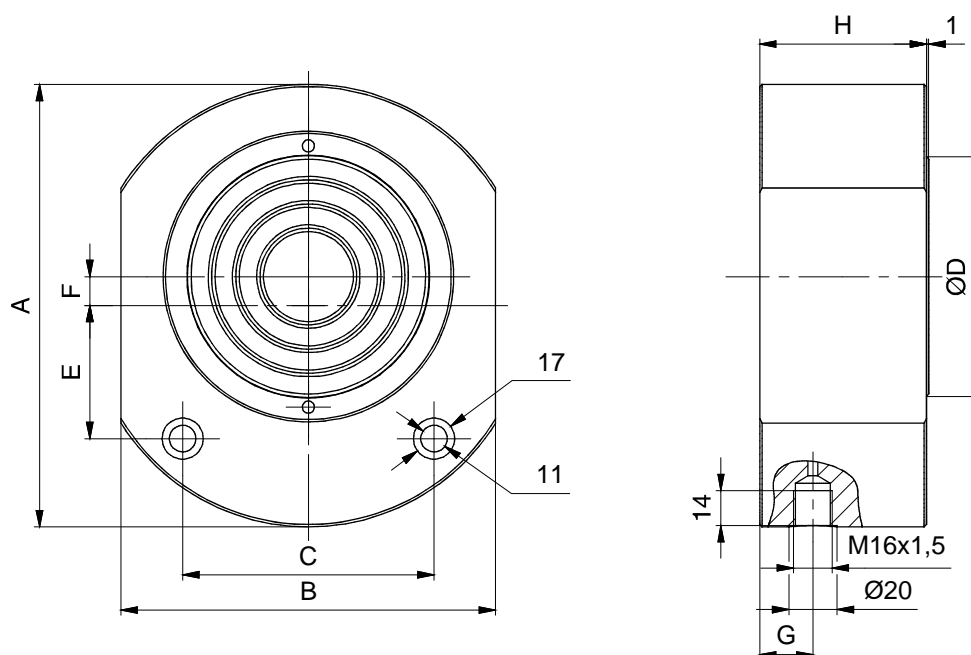
E-mail: office@fluidotehnic.com

LOW HEIGHTS CYLINDERS



Low heights cylinders are intended for achieving great power with small strokes. Due to the small dimensions they can be installed in places where space is very cramped. Cylinders are single-acting and strictly must be taken care that declared stroke is not exceeded, otherwise cylinder and seals can be damaged. Their robust construction, precise production and high quality sealing material are the parameters for the long life of device. The construction is determined. Design of the cylinder allows the piston back to the starting position due to the load.

On the customer request cylinders may have other strokes and load capacity.



| Type | Load capacity (daN) | Stroke | D | A | B | C | E | F | G | H | Mass (kg) |
|-------------|------------------------|--------|------|-----|-----|-----|----|------|------|-----|--------------|
| | | | (mm) | | | | | | | | |
| JC-P 6/10 | 6.300 | 10 | 40 | 92 | 71 | 50 | 24 | 11 | 22,5 | 45 | 3 |
| JC-P 8/10 | 7.900 | 10 | 45 | 106 | 80 | 58 | 25 | 12,5 | 22,5 | 45 | 4,5 |
| JC-P 10/10 | 9.800 | 10 | 50 | 120 | 90 | 68 | 25 | 15 | 22,5 | 47 | 6 |
| JC-P 25/15 | 25.100 | 15 | 80 | 150 | 126 | 85 | 35 | 12 | 22,5 | 64 | 11 |
| JC-P 40/15 | 39.200 | 15 | 100 | 183 | 155 | 104 | 55 | 12 | 22,5 | 69 | 13 |
| JC-P 100/15 | 100.500 | 15 | 160 | 265 | 240 | 180 | 70 | 10 | 30 | 90 | 19 |
| JC-P 160/15 | 157.000 | 15 | 200 | 330 | 310 | 310 | 84 | 10 | 43 | 112 | 36 |

| | | |
|----------------------|-------------|------------------------------|
| Fluid | mineral oil | |
| | viscosity | 20 do 400 mm ² /s |
| | temperature | -20 do +80 °C |
| Working pressure max | | 500 bar |
| Piston speed | | max 0,01 m/s |
| Load direction | | along the cylinder axis |



S E R B I A

36210 VRNJACKA BANJA

Rudjinci 175/A

tel/fax: +381 - 36 - 631 - 710
631 - 711

E-mail: office@fluidotehnic.com



FLUIDOTEHNIC

PRIVREDNO DRUŠTVO ZA PROIZVODNJU PROMET I USLUGE D.O.O.

SERBIA

36210 VRNJACKA BANJA

Rudjinci 175/A

tel/fax: +381-36-631-710

E-mail: office@fluidotehnic.com

Web: www.fluidotehnic.com

Matični broj: 06568939

Šif.delatnosti: 2822

PIB: 100918689

Reg.br.: 11506568939

Br.reg.upisa:1-14429-00



EC DECLARATION OF CONFORMITY /DECLARATION ON INSTALLATION DEKLARACIJA O USAGLAŠENOSTI/DEKLARACIJA O UGRADNJI

We hereby declare that the following product

Izjavljujemo da su slede i ure aji

Hydraulic cylinders (Hidrauli ki cilindri)

Hand pumps (Ru ne pumpe)

Actuators (Aktuatori)

Hydraulic presses (Hidrauli ne prese)

Change-over valve (Hidrauli ki razvodnici)

Electric driven change-over valve (Elektromotorni razvodnici)

Pressure and flow valves (Ventili pritiska i protoka)

Are designed and produced in accordance with the safety requirements according to the following regulations:

Projektovani i proizvedeni u skladu sa bezbednosnim zahtevima prema slede im propisima:

Machinery Directive EC/2006/42

(Mašinska direktiva EC/2006/42)

Low voltage directive EC/2006/95

(Niskonaponska direktiva EC/2006/95)

in accordance with the following standards:

i u skladu sa slede im standardima:

Safety of machinery - General principles for design

- Risk assessment and risk reduction EN ISO 12100:2010

Bezbednost mašina - Opšti principi za projektovanje

- Ocena rizika i smanjenje rizika SRPS ISO 12100:2014

Safety of machinery - Electrical equipment of machines - Part 1: EN 60204-1:2006

Bezbednost mašina - Elektri na oprema mašina - Deo 1: EN 60204-1:2006

Declaration on installation in the sense of EC Machinery Directive (2006/42/EC) Annex II B

Izjava o ugradnji u skladu sa EC Mašinskom direktivom (2006/42/EC) Anex II B

Product of "FLUIDOTEHNIC" assemble into mechanical devices and equipment. Start-up is not admissible unless it has been verified that the whole equipment, meets the requirements defined in the EC machinery Directive (2006/42/EC)

Proizvod "FLUIDOTEHNIC"-a se ugra uje u drugu opremu i dodatne ure aje. Pokretanje nije dozvoljeno sve dok i relevantna oprema u koju se ugra uju ne bude u skladu sa Mašinskom direktivom (2006/42/EC).

The manufacturer undertakes to supply the relevant information of incomplete machine on request to responsible inspector by electronic way. Technical documents of the machine is prepared in accordance with Annex VII, part B Machinery Directive (2006/42/EC)

Proizvo a se obavezuje da e elektronskim putem dostaviti odgovaraju e podatke o delimi no završenoj mašini nadležnom inspektor u na njegov zahtev. Tehni ka dokumentacija je izra ena u skladu sa Anexom 7, deo B Mašinske direktive (2006/42/EC).

Vrnja ka Banja, 01/03/2015



Šljivi Miroslav, General Manager

The EC Declaration of Conformity is only valid in conjunction with confirmation that the device has been correctly applied, installed, inspected and maintained according to the operating instructions provided. The validity of the declaration will cease in case of any modification and/or supplement not previously approved by "FLUIDOTEHNIC".

Ova deklaracija o usaglašenosti važi samo u slu aju da je ure aj pravilno ugra en, iskontrolisan i da se koristi i održava u skladu sa uputstvom za rukovanje i održavanje. Važenje izjave prestaje u slu aju bilo kakve modifikacije ili dodatka koji nisu prethodno odobreni od "FLUIDOTEHNIC"-a.

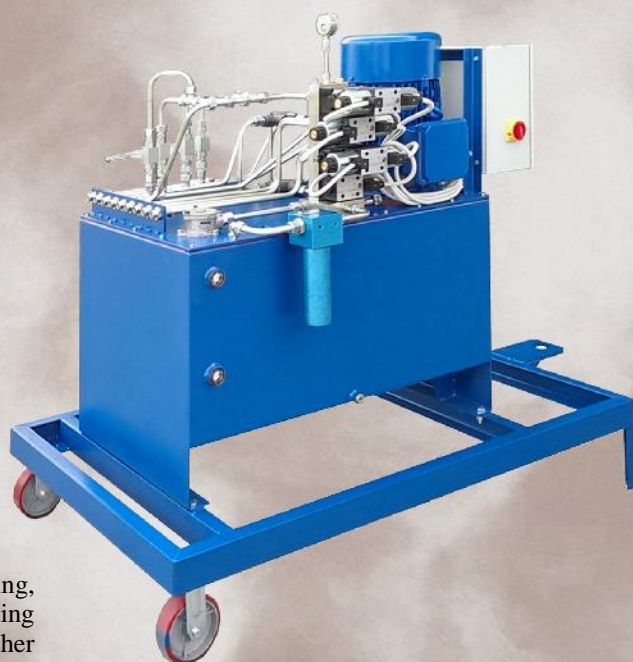
NOTES

[illegible]

Hydraulic devices produced by FLUIDOTEHNIC are modern designed and reliable in extremely hard operation conditions. These products operate faultlessly in temperature range from -45 to $+45$ °C. Standard voltage are 400 V 50Hz. On customer request are available products of various voltages, frequency, mounting dimensions and environment conditions.



Hydraulic devices produced by Fluidotehnic are of high quality and modern design. Developing department and manufacture plant of Fluidotehnic are capable to produce devices and find solution for the most complex movement and control of heavy machinery. The product design is especially considered



The testing of the parts and manifolds is 100%. After assembling, characteristics of each product, or of whole system, are checked on testing device. The results processed by computer are enclosed in delivery with other documentation



FLUIDOTEHNIC



SERBIA

36210 VRNJACKA BANJA
Rudjinci 175/A

tel/fax +381-36-631-710
631-711
631-712

Web: www.fluidotehnic.com
E-mail: office@fluidotehnic.com

štampa 03/2016