

TWO-LINE ELECTRIC DRIVEN CHANGE-OVER VALVE 24V DC/230V AC

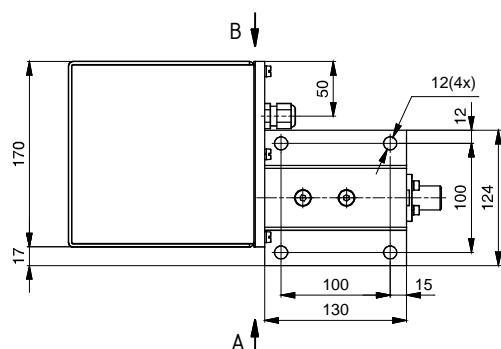
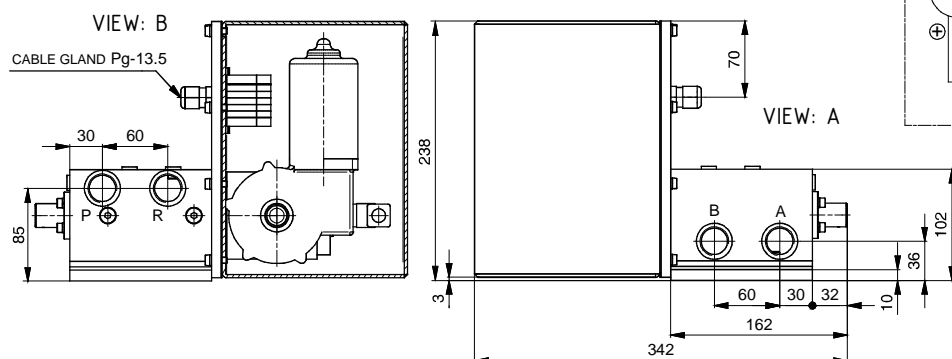
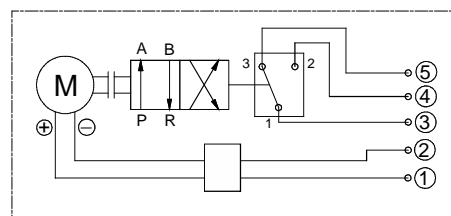


The two-line electric driven change-over valve is applied for grease lubrication systems. After the lubrication cycle of one line, pressure switches send a signal to control unit to turn off the pump and start the change-over valve motor. Then lubrication cycle transmits to second line. After the pause, the cycles continue by the same principle. Robust design and reliable operation make this device suitable for long time operation in very hard working conditions: in iron plants, mines, excavators. Electric motor voltage is 24V DC or 230V AC.

When ordering, it should be noted supply voltage.

Example: 10-2725-230V AC

SYMBOL:



Ordering code	10-2725	
Lubricant	oil viscosity	>13 mm ² /s
	grease NLGI	NLGI <3
	temperature	-30 do +80 ⁰ C
Operating pressure max.	400 bar	
Lubrication flow max.	65 dm ³ /h	
Switching time	1 s	
Connecting port	G 3/4"	
Electric indicator	250V 5A	
Electric motor	voltage	24V DC/230V AC
	current	1,1A/0,25A
	speed	30 rpm
Mass	15,5 kg	



SERBIA

36210 VRNJACKA BANJA

Rudjinci 175/A

tel/fax: +381 - 36 - 631 - 710

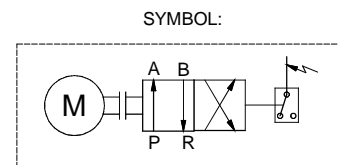
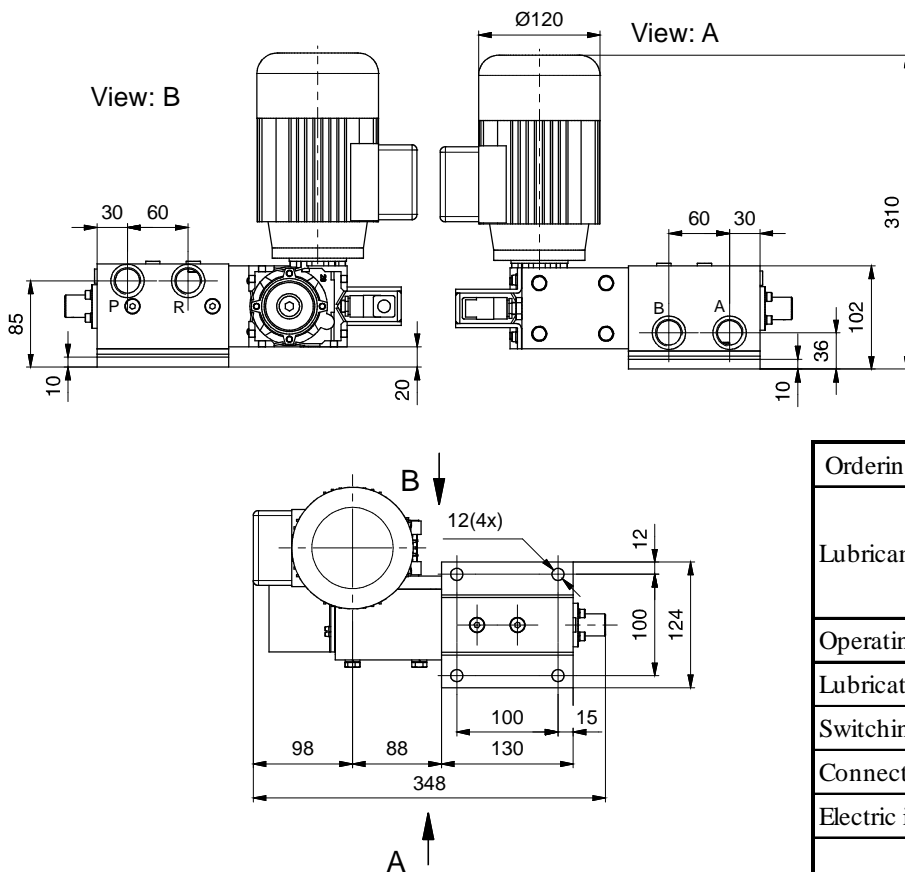
631 - 711

E-mail: office@fluidotehnic.com

TWO-LINE ELECTRIC DRIVEN CHANGE-OVER VALVE



The two-line electric driven change-over valve is applied for grease lubrication systems. After the lubrication cycle of one line, pressure switches send a signal to control unit to turn off the pump and start the change-over valve motor that transmits lubrication cycle to second line. After the pause, the cycle continues by the same principle. Robust design and reliable operation make this device suitable for long time operation in very hard working conditions: in iron plants, mines, excavators. Electric motor voltage is 3x400V 50Hz.



Ordering code	10-2750	
Lubricant	oil viscosity	>13 mm ² /s
	grease NLGI	NLGI <3
	temperature	-30 do +80 ⁰ C
Operating pressure max.	400 bar	
Lubrication flow max.	65 dm ³ /h	
Switching time	2,0 s	
Connecting port	G 3/4"	
Electric indicator	250V 5A	
Electric motor	voltage	3x400V 50Hz
	current	0,09 KW
	rpm	1420 rpm
Gear box ratio	100:1	
Mass	12,9 kg	



S E R B I A

36210 VRNJACKA BANJA
Rudjinci 175/A

tel/fax: +381 - 36 - 631 - 710
631 - 711

E-mail: office@fluidotehnic.com