

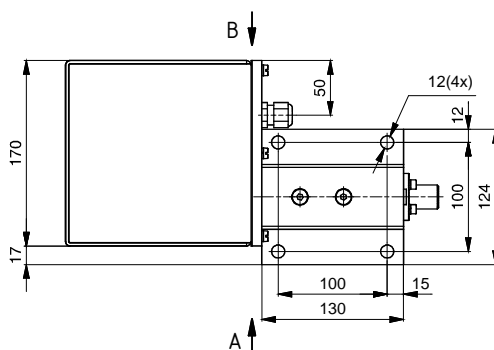
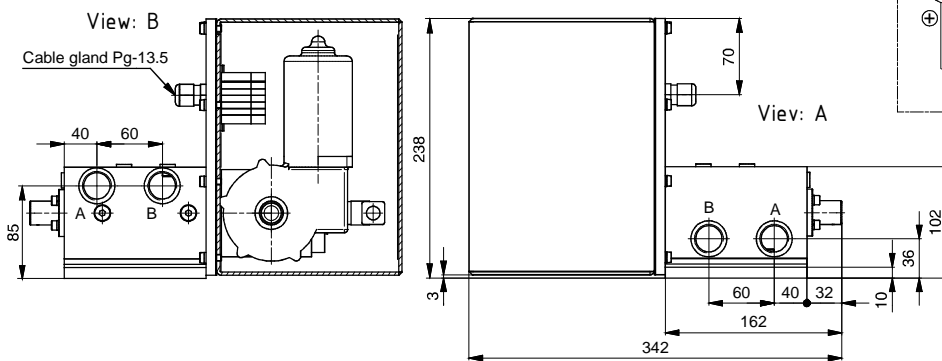
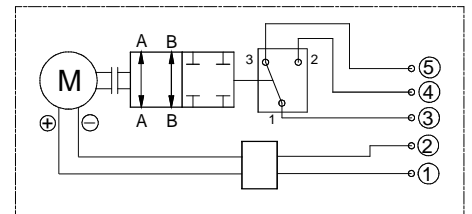
TWO-LINE ELECTROMOTIVE TAP 24V DC/230V AC



Two-line electromotive tap is applied in complex systems for central grease lubrication. If we have a two-line complex system, where it is necessary that certain groups of lubrication points have different lubrication time intervals or should be lubricated only places that were in operation, it is necessary to install these taps. In this way, if necessary, up includes or includes lubrication in the particular branches of installation. Robust design and reliable operation make this device suitable for long time operation in very hard working conditions in iron plants, mines, excavators. Electric motor voltage is 24V DC or 230V AC.

When ordering, it should be noted supply voltage.

SIMBOL:



| | | |
|-------------------------|-----------------------|---------------------------|
| Ordering code | 10-2740 | |
| Lubricant | oil viscosity | >13 mm ² /s |
| | grease NLGI | NLGI <3 |
| | temperature | -30 do +80 ⁰ C |
| Operating pressure max. | 400 bar | |
| Lubrication flow max. | 65 dm ³ /h | |
| Switching time | 1,0 s | |
| Connecting port | G 3/4" | |
| Electric indicator | 250V 5A | |
| Electric motor | voltage | 24V DC/230V AC |
| | current | 1,1A |
| | speed | 30 rpm |
| Mass | 15,5 kg | |



SERBIA

36210 VRNJACKA BANJA

Rudjinci 175/A

tel/fax: +381 - 36 - 631 - 710

631 - 711

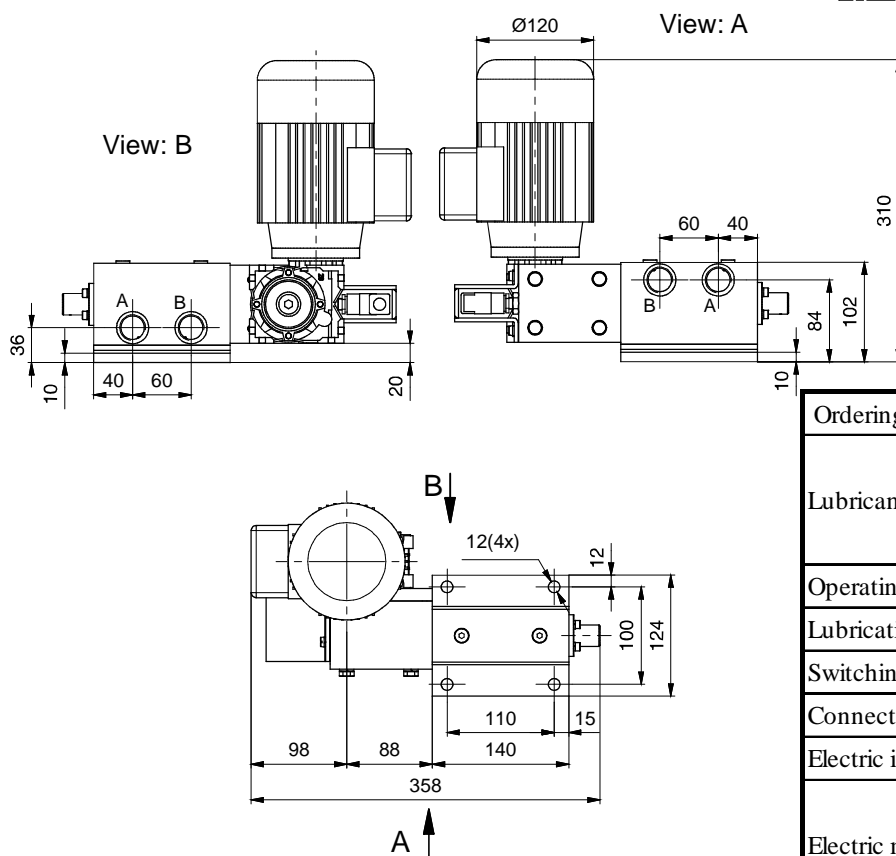
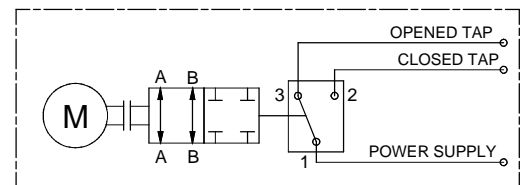
E-mail: office@fluidotehnic.com

TWO-LINE ELECTROMOTIVE TAP



Two-line electromotive tap is applied in complex systems for central grease lubrication. If we have a two-line complex system, where it is necessary that certain groups of lubrication points have different lubrication time intervals or should be lubricated only places that were in operation, it is necessary to install these taps. In this way, if necessary, up includes or includes lubrication in the particular branches of installation. Robust design and reliable operation make this device suitable for long time operation in very hard working conditions: in iron plants, mines, excavators.

SYMBOL:



| | | |
|-------------------------|-----------------------|---------------------------|
| Ordering code | 10-2780 | |
| Lubricant | oil viscosity | >13 mm ² /s |
| | grease NLGI | NLGI <3 |
| | temperature | -30 do +80 ⁰ C |
| Operating pressure max. | 400 bar | |
| Lubrication flow max. | 65 dm ³ /h | |
| Switching time | 2,0 s | |
| Connecting port | G 3/4" | |
| Electric indicator | 250V 5A | |
| Electric motor | voltage | 3x400V 50Hz |
| | current | 0,09 KW |
| | rpm | 1420 rpm |
| Gear box ratio | 100:1 | |
| Mass | 13,3 kg | |



SERBIA
 36210 VRNJACKA BANJA
 Rudjinci 175/A
 tel/fax: +381 - 36 - 631 - 710
 631 - 711
 E-mail: office@fluidotehnic.com