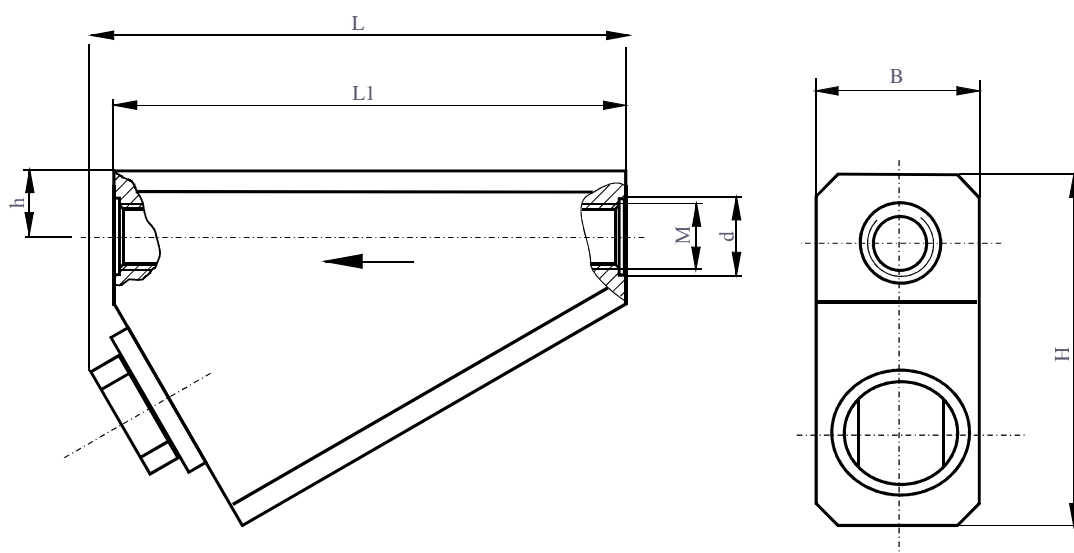


PRESSURE LINE FILTER (FOR GREASE LUBRICATION SYSTEMS)

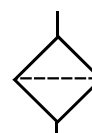
Pressure line filter is applied for grease lubrication systems. It is capable for operation in very hard conditions. The filter can be assembled in pressure line in any position. Flow direction is indicated by the arrow on the filter body. The filter cartridge is made of high strength wire cloth. Periodically it is necessary to clean the filter cartridge. To disassembling unscrew the safety nut. The cleaning period depends of the operating time and of the grease purity. Two sizes are available:

- for the flow rate up to 600 cm³/min
- for the flow rate up to 100 cm³/min

The filter cartridge wash up on every 180kg consumed fats, replacement: after 5 wash. Before resumption of filter cartridge, obligately switch on the pump manually for the purpose of ejection, through the grease, possible impurity in the filter.



SYMBOL:



| | | | |
|--------------------|---------------|--------------------------|--------------------------|
| Ordering code | | 10 - 2650 | 10 - 2660 |
| Fluid | Oil viscosity | >13 mm ² /s | |
| | Grease. | NLGI <3 | |
| | Temperature | -30 ; +80 °C | |
| Operating pressure | | 400 bar | |
| Filtration rating | | 150 μm | |
| Flow rate | Oil | 6 dm ³ /min | 1 dm ³ /min |
| | Grease | 600 cm ³ /min | 100 cm ³ /min |
| Mass | | 2,2 kg | 1,4 kg |

| Ordering code | M | d | L | L1 | h | H | B |
|---------------|----------|----|-----|-----|----|----|----|
| 10 - 2650 | M 22x1,5 | 28 | 130 | 128 | 15 | 89 | 45 |
| 10 - 2660 | R 1/4" | 20 | 115 | 105 | 16 | 76 | 35 |



SERBIA
36210 VRNJACKA BANJA
Rudjinci 175/A
tel/fax: +381 - 36 - 631 - 710
631 - 711
E-mail: office@fluidotehnic.com