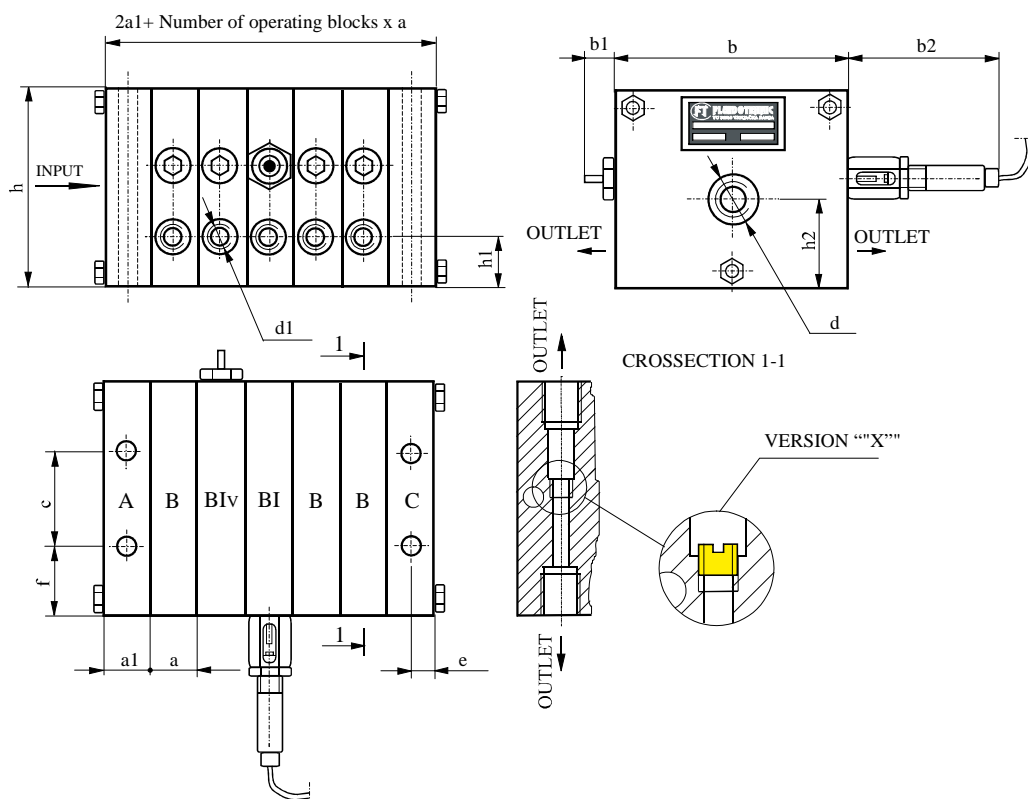


PROGRESSIVE DOSER DISTRIBUTORS

The progressive doser distributors are executive devices in progressive automatic and hand operated systems for centralized lubrication. The distributor is an assembly of several elements connected to each other to form a unit. These elements are: inlet block (A), operating blocks (B) and final block (C). The number of operating blocks can be from min. 3 to max. 12. A distributor operation can be monitored by installing one operation block with visual indicator (BIv) or inductive transducer (BI) which provides electric control as well as visual indication.

TYPE		PD1	PD2
Lubricant	Oil viscosity	$>13 \text{ mm}^2/\text{s}$	
	Grease	NLGI <3	
	Temperature	$-30; +80^\circ\text{C}$	
Operating pressure		10 - 250 bar	10 - 350 bar
Flow rate	Oil	$500 \text{ cm}^3/\text{min}$	$2000 \text{ cm}^3/\text{min}$
	Grease	$50 \text{ cm}^3/\text{min}$	$200 \text{ cm}^3/\text{min}$
Inductive transducer	Voltage	12 - 24 V DC	
	Current	200 mA	
	type	NO PNP	
Mass of the block		0,4 kg	0,9 kg



SERBIA

36210 VRNJACKA BANJA

Rudjinci 175/A

tel/fax: +381 - 36 - 631 - 710

631 - 711

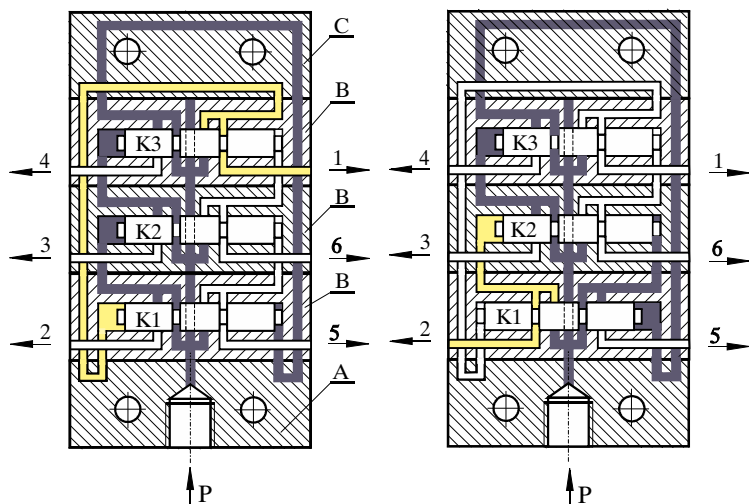
E-mail: office@fluidotehnic.com

TYPE	d	d1	a	a1	b	b1	b2	c	f	h	h1	h2	e
PD1	G 1/4"	R 1/8"	22	20	58	12	100	22	18	52	12	22	10
PD2	G 3/8"	R 1/4"	26	25	84	12	100	34	25	65	16	28	12,5

Operation mode is explained on three-element distributor. Pressurized lubricant supplied through the port P is passing through the blocks B and C and pushing the spool K1 to the left. The lubricant is discharged through the outlet 1. Then the spool K2 is actuated and in the same way discharges lubricant through the outlet 2. This cycle is proceeding until the lubricant is supplied to distributor.



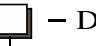

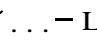

There are various possibilities of combining outlet volumes. Removing the screw "X" and plugging an outlet port results in duplicating the lubricant quantity on the opposite outlet port.

Interconnecting the neighboring blocks results in summation of their outlet volumes.



Designation:

According to the request, a designation is formed for a complete distributor or individual blocks only. The request is to include all data as follows:

DOZER  -  /  - D /  / ... - L /  / ... - 

Type: PD1, PD2 _____

Number of operating blocks B : 3 to 12 _____

Number of outlet ports: 2 to 24 _____

Volumes at outlets, right and left : cm³ x 10 _____


Operating indicator _____


- = none
I = electrical
Iv = visual





-Note

Installing interconnection results in the volume which is the total of individual volumes. The flow rate is equal to zero if the screw "X" is removed and an outlet port is plugged. Complete volume is directed through the port on the opposite side.

DOSING VOLUME FOR WORK BLOCKS "B"			
PD1		PD2	
Code	cm ³ /stroke	Code	cm ³ /stroke
1,5	0,15	3,5	0,35
2	0,2	5	0,5
2,5	0,25	8	0,8
3	0,3	10	1
4	0,4		

Blocks Inlet block A -  Type: PD1, PD2

Final block C - 

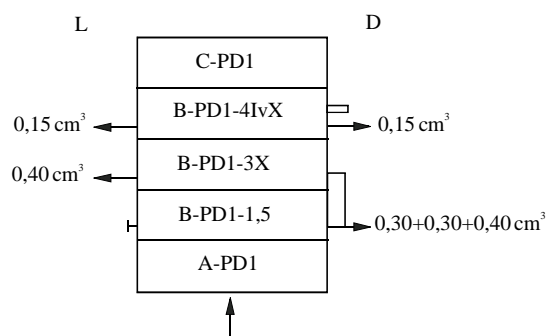
Operating block B -  -  -  - 

Dosing designation _____

Operating indicator _____

Internal outl. blocking _____ X blocked - opened

Example



Dose distributor PD1-3/4-D/10/0/1.5-L/0/4/1.5-Iv



S E R B I A

36210 VRNJACKA BANJA
Rudjinci 175/A

tel/fax: +381 - 36 - 631 - 710
631 - 711

E-mail: office@fluidotehnic.com