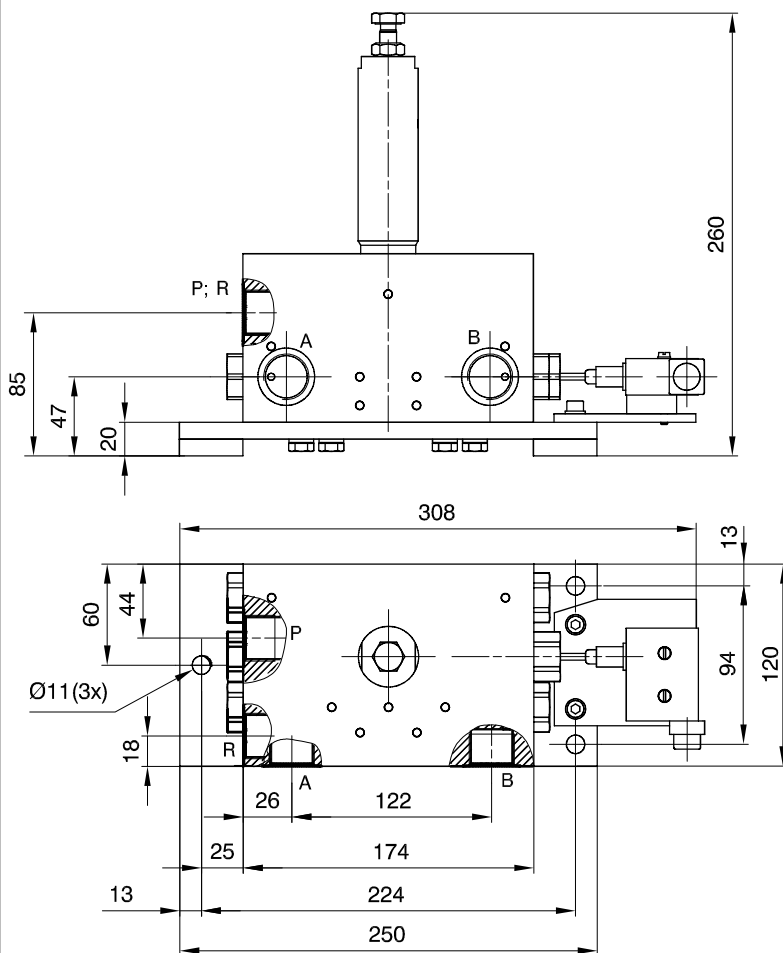


CHANGE-OVER VALVE

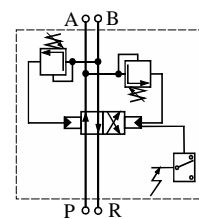
10-0650

The change-over valve is a control device applied in two-line centralized lubrication systems. When the pressure in distributing line increases to the adjusting value (50 - 350bar), lubrication cycle is completed. This is indicated by micro switch of electric indicator. The valve spool moves to another position connecting the second line to the pump. Starting the pump begins the lubrication cycle in second line. This simplifies the control of whole lubrication system. To adjust the switching pressure turn the screw CH 17 which is located on the regulator body.

Robust design, big discharge cross section (NG 10), high precisely fitted spools and easy control, make this device suitable for long time operation in very hard working conditions in small and middle size lubrication systems (excavators, iron plants, cement works, mines).



SYMBOL:



Ordering code	10 - 0650	
Fluid	Oil viscosity	$>13 \text{ mm}^2/\text{s}$
	Grease	NLGI <3
	Temperature	$-30 ; +80 \text{ }^\circ\text{C}$
Operating pressure	50 - 350 bar	
Flow rate	max. $40 \text{ dm}^3/\text{h}$	
Connecting ports	G 3/4 "	
Electric indicator	max. 220 V 5 A	
Mass	18,5 kg	

FT FLUIDOTEHNIC

SERBIA

36210 VRNJACKA BANJA

Rudjinci 175/A

tel/fax: +381 - 36 - 631 - 710

631 - 711

E-mail: office@fluidotehnic.com

