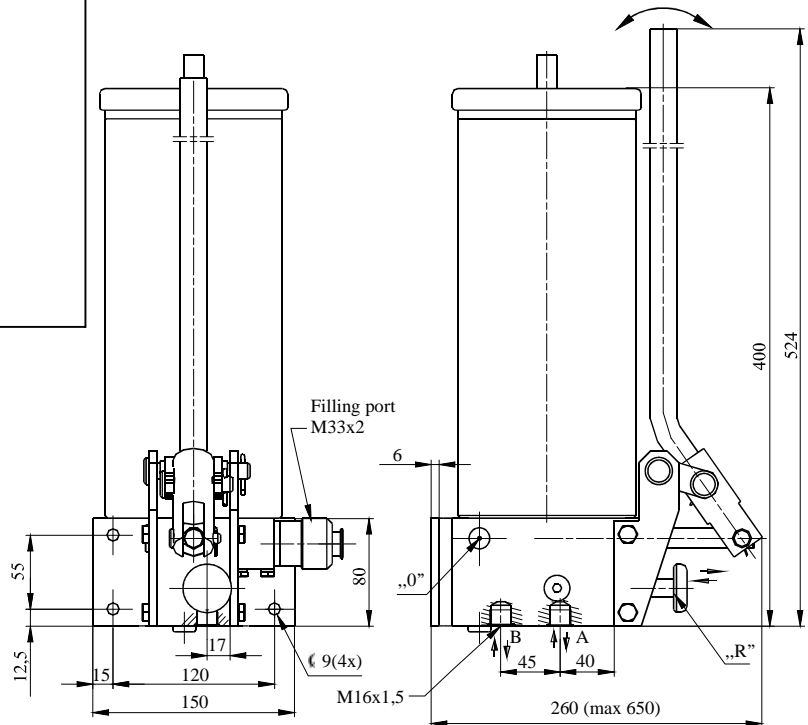


# HAND PUMP FOR TWO LINE LUBRICATION

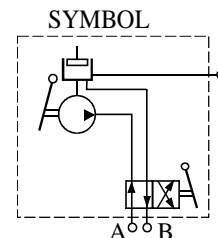


The hand pump 10-2450 used for small two-line lubrication systems. It is suitable for operation in very hard working conditions (excavators for surface exploitation, iron plants, cement works). This piston pump is equipped with tank, hand actuated distributing valve for line switching (R) and visual indicator with a weight.

The tank can be filled using the charging pump or directly, removing the tank cover and visual indicator. To remove air from lubricant release screw "O", pull the pump lever to end position, retight the screw and push the lever back. If necessary, repeat this procedure.



Ordering code	10 - 2450	
Fluid	Oil viscosity	>13 mm <sup>2</sup> /s
	Grease	NLGI <3
	Temperature	-30 ; +80 °C
Operating pressure	max. 200 bar	
Flow per cycle	8 cm <sup>3</sup>	
Force on lever under max. pressure	35 daN	
Connection ports	M16x1,5	
Tank volume	3 dm <sup>3</sup>	
Mass	14 kg	



**SERBIA**

36210 VRNJACKA BANJA

Rudjinci 175/A

tel/fax: +381 - 36 - 631 - 710

631 - 711

E-mail: office@fluidotehnic.com