

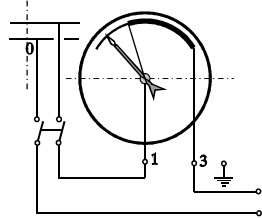
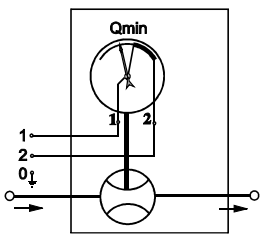
FLOW INDICATOR



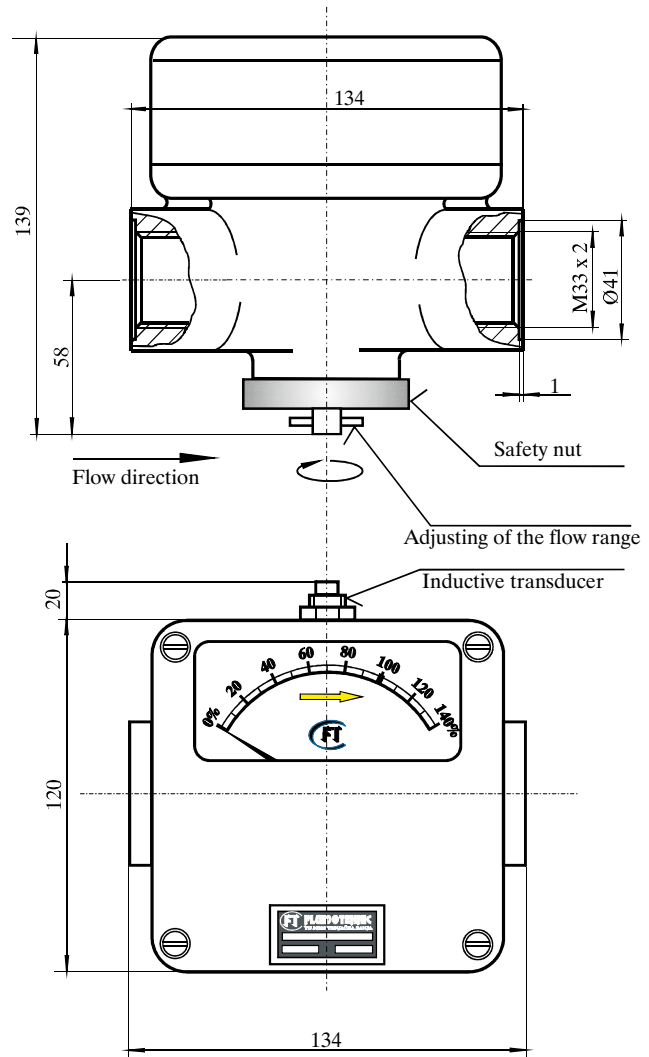
This device is applied for lubrication and cooling systems where oil flow control is necessary. Indication is visual by scales in percent values, and electrical by inductive transducer. The adjusting of the device is very simply. After the mounting of the device system can be started and the safety nut should be released. When the flow rate is nominal, put the black pointer on 100% by turning of adjusting axle (direction of adjusting axle is the same as direction of the pointer). Adjusted value should be fixed by safety nut. Proper adjusted device is high precise in wide range of the flow.

Electrical control is performed by inductive transducer which is adjusted to give signal (switching of the contact) in case of flow decreases (due to some failure in system) under the 70% of nominal value. The devices of other warning values of the flow are available on request.

SYMBOL:



1. CONTACT OPENED IN CASE OF FLOW DECREASES UNDER LIMITED VALUE



Ordering code	10 - 0850	10 - 0850/1
Fluid	Oil viscosity	13 - 800 mm ² /s
	Temperature	-30 ; +80 °C
Operating pressure	0,5-15 bar	
Flow rate	30-100 dm ³ /min	10-35 dm ³ /min
Controlled flow rate	15-100 dm ³ /min	5-45 dm ³ /min
Connection ports	M33x2	
Inductive level indicator	Voltage	12 - 24 V DC
	Max current	200 mA
	type	NO PNP
Mass	3,2 kg	



SERBIA

36210 VRNJACKA BANJA
Rudjinci 175/A

tel/fax: +381 - 36 - 631 - 710
631 - 711

E-mail: office@fluidotehnic.com