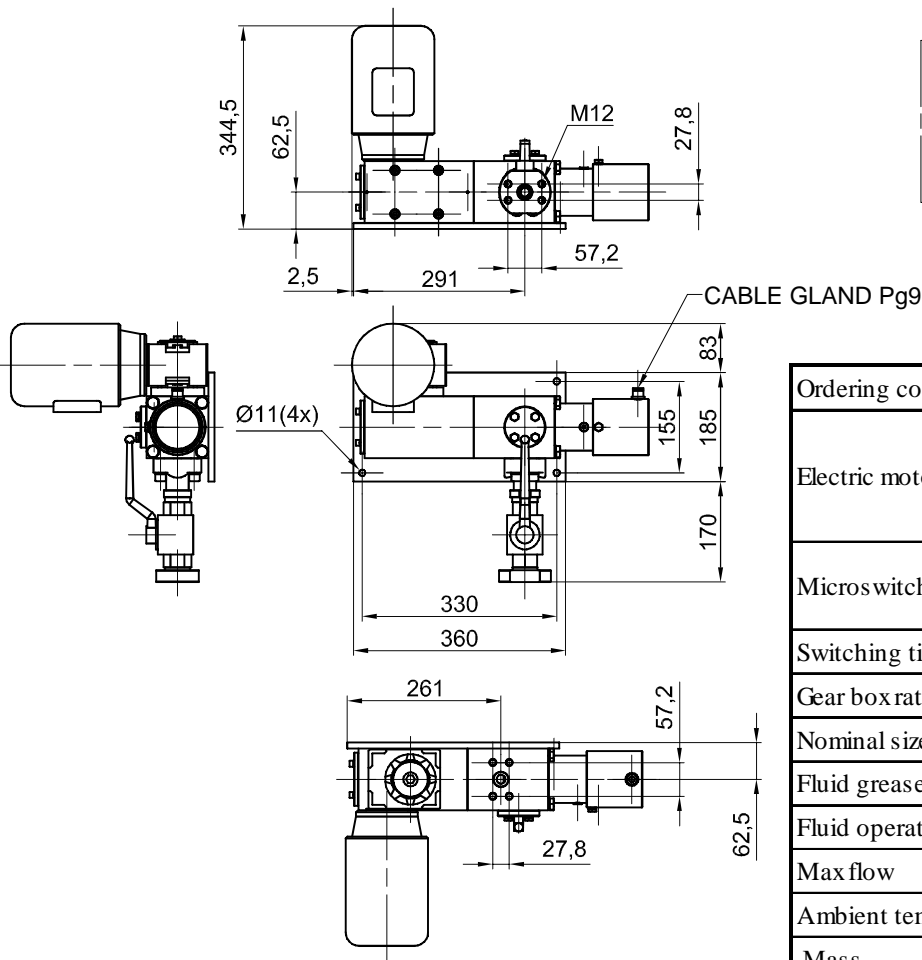


ELECTROMOTIVE TAP

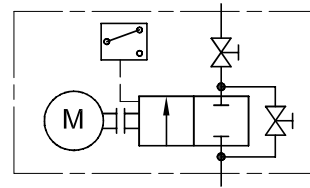


Electromotive tap is used to central refill (supplement) system of grease pumps. When a level of grease in the certain lubricating pump is lowered to a minimum, electric control unit gives command to open the tap and includes a central pump for refill. When a level of grease come to maximum, the tap closes and pump for refill switches off. In this way it provided safe grease transportation to the pumps for lubrication and prevented the possibility of grease contamination with dirt. This is particularly useful in places with hard working conditions and dirty environments, such as mills, coke plants, foundries, cement plants...

Due to robust construction, very precise built-in pistons and easy operation of the whole system, this device is very suitable for use in all systems of central grease refill (supplement).



SYMBOL



| | | |
|--------------------------|------------------------|---------------|
| Ordering code | 543-6500 | |
| Electric motor | Voltage | 3x400 V 50 Hz |
| | Power | 0,09 KW |
| | speed | 670 rpm |
| Microswitch | Voltage | 250 V AC |
| | max.current | 10A |
| Switching time | 4,3 s | |
| Gear box ratio | 100:1 | |
| Nominal size | NO 25 | |
| Fluid grease | NLGI <3 | |
| Fluid operating pressure | max. 400 bar | |
| Max flow | 6 dm ³ /min | |
| Ambient temperature | -30 ; +80 °C | |
| Mass | 46 kg | |