

## ELECTRIC DRIVEN PUMP (FOR GREASE LUBRICATION SYSTEMS)



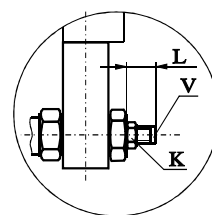
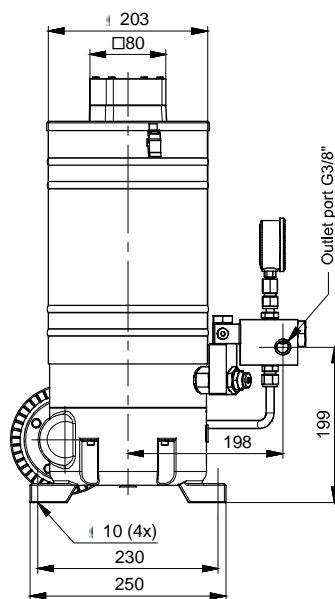
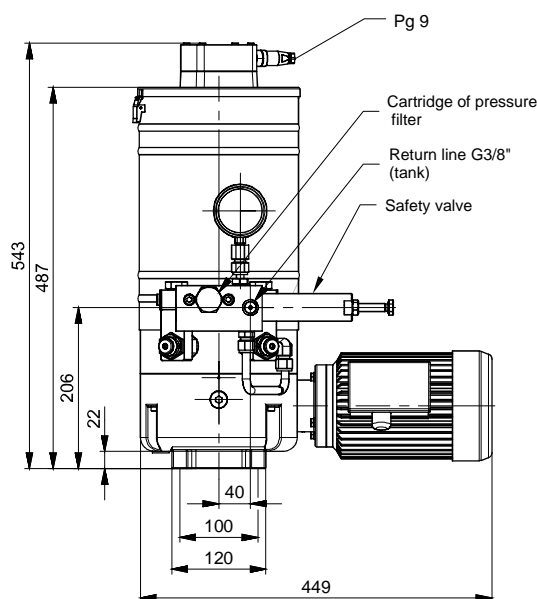
Electric driven pump for grease and oil lubrication usually is applied for smaller centralized two-lines systems. It is suitable for operation in very hard working conditions (excavators for surface mines, iron plants, cement works e.t.c.) This pump has two pump elements with variable flow and possibility of independent regulation minimum to maximum value. It is possible to cut out outlet ports, if it is necessary.

The pump is factory adjusted to the maximum flow so the dimension "L" is 16mm. By loosening nut "K" and turning the adjusting screw "V" for 360 clock wise ("L" is reduced for 1 mm), the flow rate decreases to 0,11 cm<sup>3</sup> per piston stroke. Minimum flow rate corresponds the "L" value of 12 mm. The flow is reduced to zero if the dimension "L" is 9 mm. After adjusting, lock the safety nut "K" again.

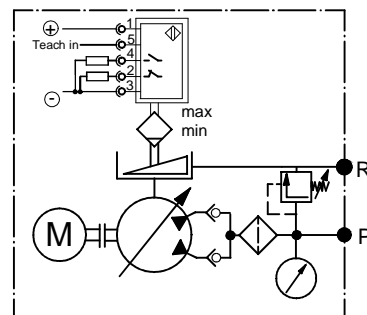
Pump with lubricant level indication have "AU" in code. Ultrasonic level indicator indicate 3 lubricant level in the tank, depending on customer requirements. For lubrication of gear unit of the pump use oil SAE 80. The oil level must be equal to down edge of filling port "A"

Ordering example for the pump with ultrasonic indicator of lubricant level for flow 18 cm<sup>3</sup>/min is:

10-2570-AU



SYMBOL



Code	Flow (adjustable)	Max. Pressure	Fluid			Gear box ratio	Electric motor			Ultrasonic level indicator "AU"	Tank volume	Mass
	cm <sup>3</sup> /min	bar	Grease	Oil visc.	Temperat.		Power	Rated speed	Voltage		dm <sup>3</sup>	kg
			NLGI	mm <sup>2</sup> /s	°C		kW	rpm	V			
10 - 2570L	10 - 27	300	≤3	>13	-25 ; +80	70:1	0,37	1460	3x400 V 50Hz	10 do 30V 200 mA 2xPNP NO / NC	10	~33
10 - 2570	7 - 18						0,25	980				
10 - 2570S	4 - 11											



**S E R B I A**  
36210 VRNJACKA BANJA  
Rudjinci 175/A  
tel/fax: +381 - 36 - 631 - 710  
631 - 711

E-mail: [office@fluidotehnic.com](mailto:office@fluidotehnic.com)

## ELECTRIC DRIVEN PUMP (FOR GREASE LUBRICATION SYSTEMS)



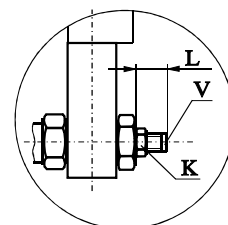
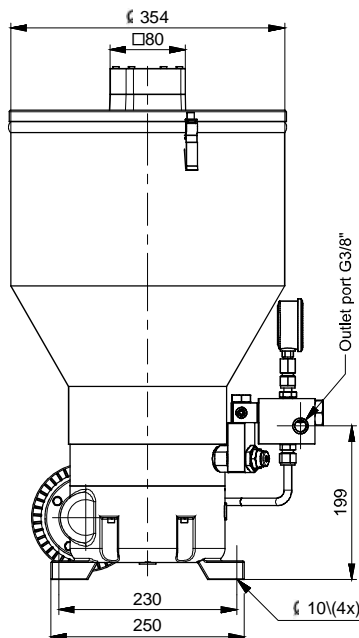
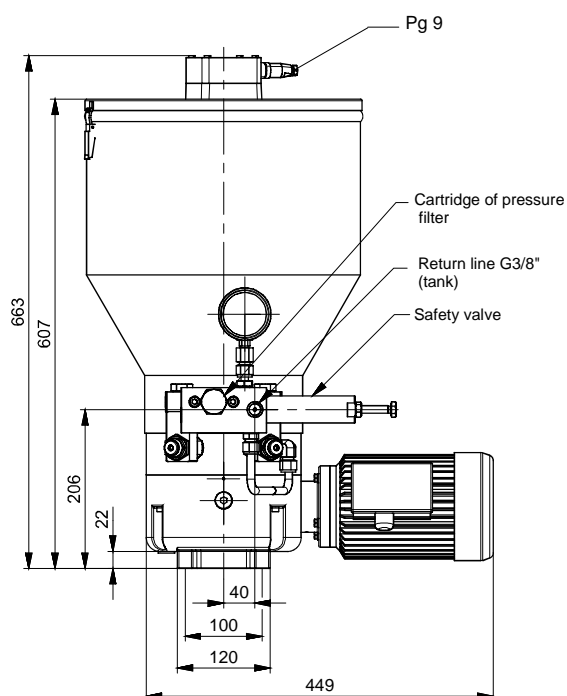
Electric driven pump for grease and oil lubrication usually is applied for smaller centralized two-lines systems. It is suitable for operation in very hard working conditions (excavators for surface mines, iron plants, cement works e.t.c.) This pump has two pump elements with variable flow and possibility of independent regulation minimum to maximum value. It is possible to cut out outlet ports, if it is necessary.

The pump is factory adjusted to the maximum flow so the dimension "L" is 16mm. By loosening nut "K" and turning the adjusting screw "V" for 360 clock wise ("L" is reduced for 1mm), the flow rate decreases to 0,11 cm<sup>3</sup> per piston stroke. Minimum flow rate corresponds the "L" value of 12 mm. The flow is reduced to zero if the dimension "L" is 9 mm. After adjusting, lock the safety nut "K" again.

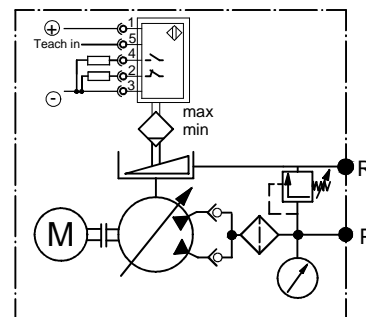
Pump with lubricant level indication have "AU" in code. Ultrasonic level indicator indicate 3 lubricant level in the tank, depending on customer requirements. For lubrication of gear unit of the pump use oil SAE 80. The oil level must be equal to down edge of filling port "A"

Ordering example for the pump with ultrasonic indicator of lubricant level for flow 27 cm<sup>3</sup>/min is:

10-2570L-1-AU



### SYMBOL



Code	Flow (adjustable)	Max. Pressure	Fluid			Gear box ratio	Electric motor			Ultrasonic level indicator "AU"	Tank volume	Mass
			Grease	Oil visc.	Temperat.		Power	Rated speed	Voltage			
	cm³/min	bar	NLGI	mm²/s	°C		kW	rpm	V		dm³	kg
10 - 2570L-1	10 - 27	300	≤3	>13	-25 ; +80	70:1	0,37	1460	3x400 V 50Hz	10 do 30V 200 mA 2xPNP NO / NC	30	~36
10 - 2570-1	7 - 18					112:1	0,25	980				
10 - 2570S-1	4 - 11											



**S E R B I A**  
36210 VRNJACKA BANJA  
Rudjinci 175/A  
tel/fax: +381 - 36 - 631 - 710  
631 - 711  
E-mail: office@fluidotehnic.com

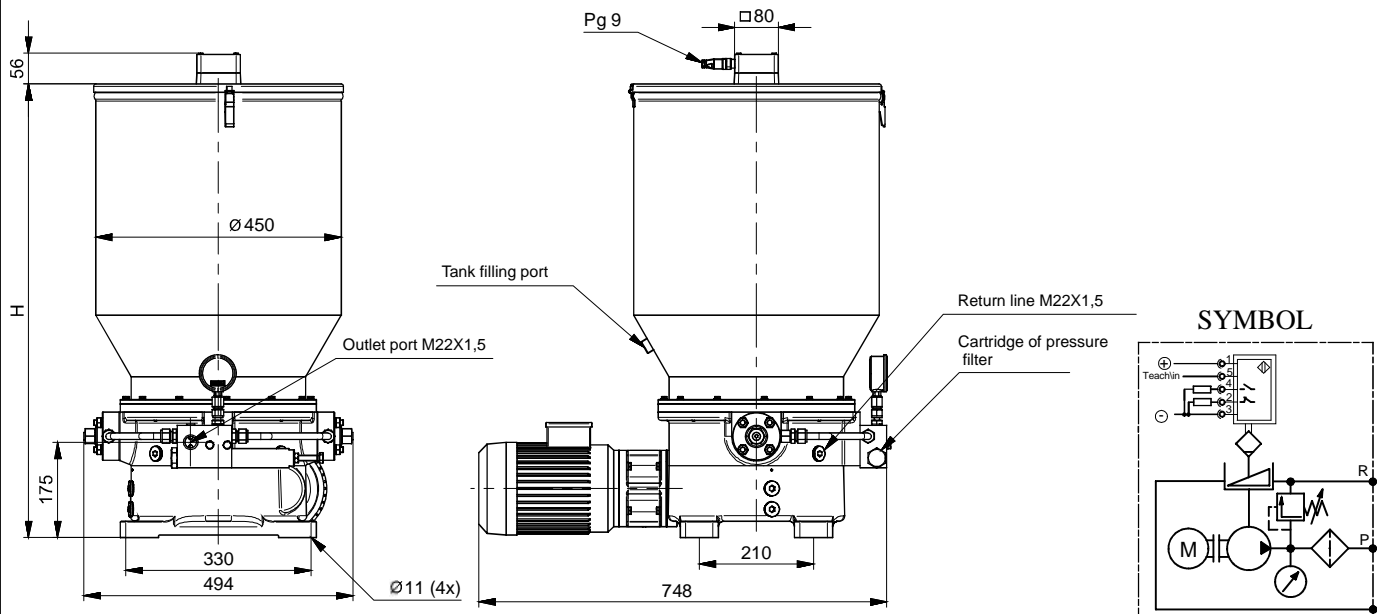
# ELECTRIC DRIVEN PUMP (FOR GRASE LUBRICATION)



This electric driven pump is usually applied for oil and grease lubrication in two-line centralized systems. It is suitable for operation in very hard working conditions (excavators for surface mine exploitation, iron plants, cement works). In tank should be posed level indicator, in this case type of pump must have "AU". Ultrasonic level indicator measures three levels of lubricant in the tank, and range be selected based on customer request. Tank can be 40, 50, 60, 80 and 100 dm<sup>3</sup>. The tank is filled through the port "D" using the charging pump (with jointing cone 24° DIN 3901/3902 M26x1,5). This is recommended to avoid particles and air in lubricant.

This piston pump is available in three variants depends of displacement and working pressure. It is equipped with pressure gauge and pressure relief valve to prevent the overload, and filter fineness 150 µm.

For lubrication of gear unit of the pump use oil SAE 80. The oil level must be equal to down edge of filling port "A". For discharging use the port "B". Non-standard tank volume marked with additional designation at the end (40, 60, 100).



Code	Flow	Max. Pressure	Fluid			Electric motor			Ultrasonic level indicator "AU"	Tank volume	H	Mass
	cm³/min	bar	Grease	Oil visc.	Temperat.	Power	Rated speed	Voltage		dm³		kg
			NLGI	mm²/s	°C	kW	rpm	V				
10 - 3500	500	250	≤3	>13	-20 ; +80	1,1	1410	3x400/50Hz	10 do 30V 200mA 2xPNP NO/NC	50	612	82
10 - 3500-1										80	832	87
10 - 3500/1	300	350								50	612	82
10 - 3500/1-1										80	832	87
10 - 3500/2	150	400								50	612	82
10 - 3500/2-1										80	832	87



**SERBIA**

36210 VRNJACKA BANJA

Rudjinci 175/A

tel/fax: +381 - 36 - 631 - 710

631 - 711

E-mail: [office@fluidotehnic.com](mailto:office@fluidotehnic.com)