

ELECTRIC DRIVEN MULTILINE PUMP (FOR GREASE LUBRICATION SYSTEMS)



This variable displacement pump is applied for oil and grease lubrication in multiline centralized systems. Displacement of each port can be adjusted separately from minimum to maximum value. It is possible to cut out some of the ports if it is necessary. The number of the ports (from 1 to 15) should be specified in order. The tank volume in standard execution is 10 lit., but other values are also available on request.

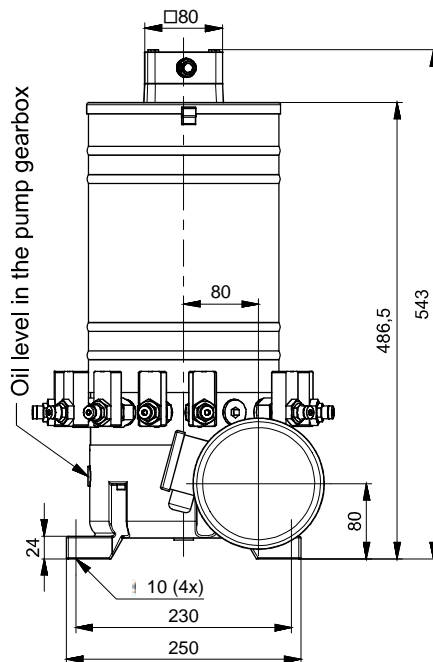
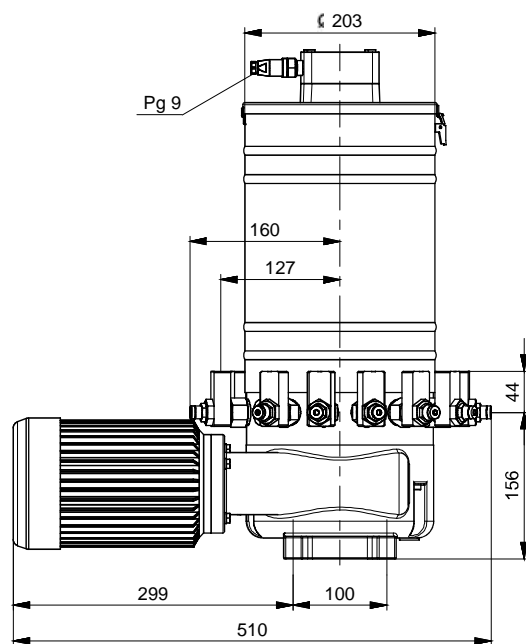
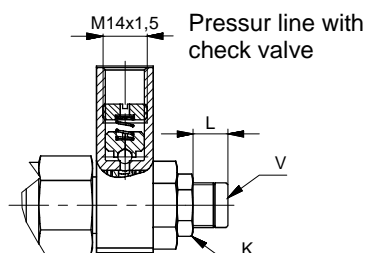
The pump is factory adjusted to the maximum flow so the dimension "L" is 16mm, i.e. 0,16 cm³ per piston stroke. By loosening nut "K" and turning the adjusting screw „V“ for 360 clock wise ("L" is reduced for 1mm), the flow rate decreases to 0,025 cm³ per piston stroke. Minimum flow rate corresponds the "L" value of 12 mm. The flow is reduced to zero if the dimension "L" is 9 mm. After adjusting lock the safety nut "K" again.

The outlet ports can be oriented upward or downward.

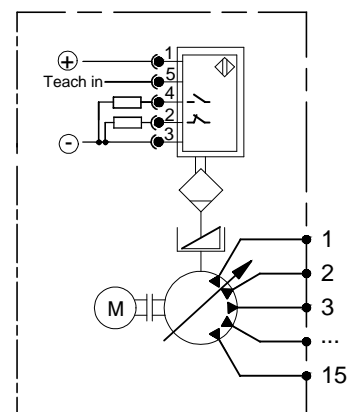
Pump with lubricant level indication have "AU" in code. Ultrasonic level indicator indicate 3 lubricant level in the tank, depending on customer requirements. For lubrication of gear unit of the pump use oil SAE 80. The oil level must be equal to down edge of filling port "A"

Ordering example for the pump with eight outlet ports and with ultrasonic indicator of lubricant level

10-2500S-AU/8



SYMBOL



Code	Flow per piston stroke (adjust.) cm ³	Flow per outlet port (adjust.) cm ³ /min	Max. Pressure bar	Number of outlet ports	Fluid			Gear box ratio	Electric motor			Ultrasonic level indicator	Tank volume dm ³	Mass kg
					Grease	Oil visc.	Temperat.		Power	Rated speed	Voltage			
					NLGI	mm ² /s	°C		kW	rpm	V			
10 - 2500	0,04 - 0,16	0,5 - 2,2	350	1 - 15	≤3	>13	-25 ; +80	70:1	0,25	980	3x400 V 50Hz	10 do 30V 200 mA 2xPNP NO / NC	10	~29
10 - 2500S		0,35 - 1,4						112:1						
10 - 2500L		0,85 - 3,4						70:1						



SERBIA

36210 VRNJACKA BANJA

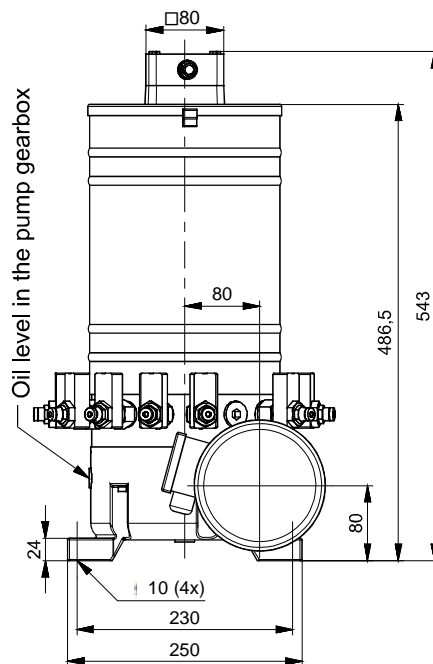
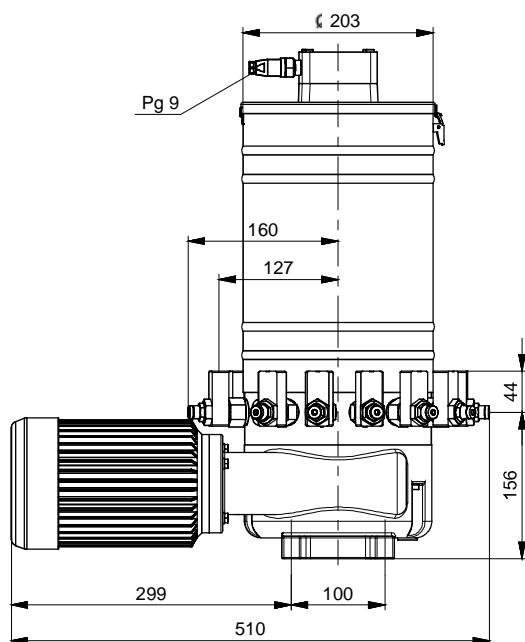
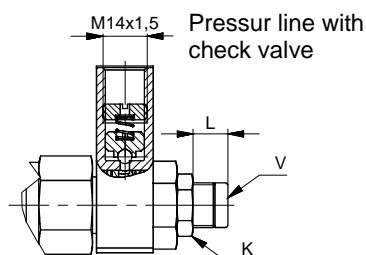
Rudjinci 175/A

tel/fax: +381 - 36 - 631 - 710

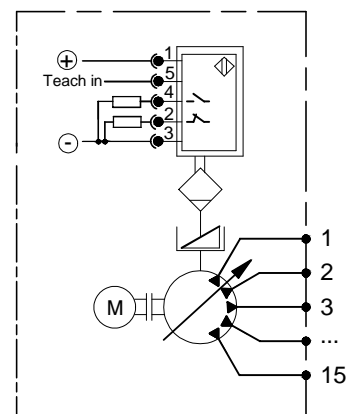
631 - 711

E-mail: office@fluidotehnic.com

ELECTRIC DRIVEN MULTILINE PUMP (FOR GREASE LUBRICATION SYSTEMS)



SYMBOL



This variable displacement pump is applied for oil and grease lubrication in multiline centralized systems. Displacement of each port can be adjusted separately from minimum to maximum value. It is possible to cut out some of the ports if it is necessary. The number of the ports (from 1 to 16) should be specified in order. The tank volume in standard execution is 10 lit., but other values are also available on request.

The pump is factory adjusted to the maximum flow so the dimension "L" is 16mm, i.e. 0,16 cm³ per piston stroke. By loosening nut "K" and turning the adjusting screw „V“ for 360 clock wise ("L" is reduced for 1mm), the flow rate decreases to 0,025 cm³ per piston stroke. Minimum flow rate corresponds the "L" value of 12 mm. The flow is reduced to zero if the dimension "L" is 9 mm. After adjusting lock the safety nut "K" again.

The outlet ports can be oriented upward or downward.

Pump with lubricant level indication have "AU" in code. Ultrasonic level indicator indicate 3 lubricant level in the tank, depending on customer requirements. For lubrication of gear unit of the pump use oil SAE 80. The oil level must be equal to down edge of filling port "A"

Ordering example for the pump with sixteen outlet ports and with ultrasonic indicator of lubricant level for flow 1,4 cm³/min per port is:

10-6000S-AU/16

Code	Flow per piston stroke (adjust.) cm ³	Flow per outlet port (adjust.) cm ³ /min	Max. Pressure bar	Number of outlet ports	Fluid			Gear box ratio	Electric motor			Ultrasonic level indicator	Tank volume dm ³	Mass kg
					Grease	Oil visc.	Temperat.		Power	Rated speed	Voltage			
					NLGI	mm ² /s	°C		kW	rpm	V			
10 - 6000	0,04 - 0,16	0,5 - 2,2	350	1 - 16	≤3	>13	-25 ; +80	70:1	0,25	980	3x400 V 50Hz	10 do 30V 200 mA 2xPNP NO/ NC	10	~30
10 - 6000S		0,35 - 1,4						112:1						
10 - 6000L		0,85 - 3,4						70:1	0,37	1460				



S E R B I A

36210 VRNJACKA BANJA
Rudjinci 175/A

tel/fax: +381 - 36 - 631 - 710
631 - 711

E-mail: office@fluidotehnic.com

ELECTRIC DRIVEN MULTILINE PUMP (FOR GREASE LUBRICATION SYSTEMS)



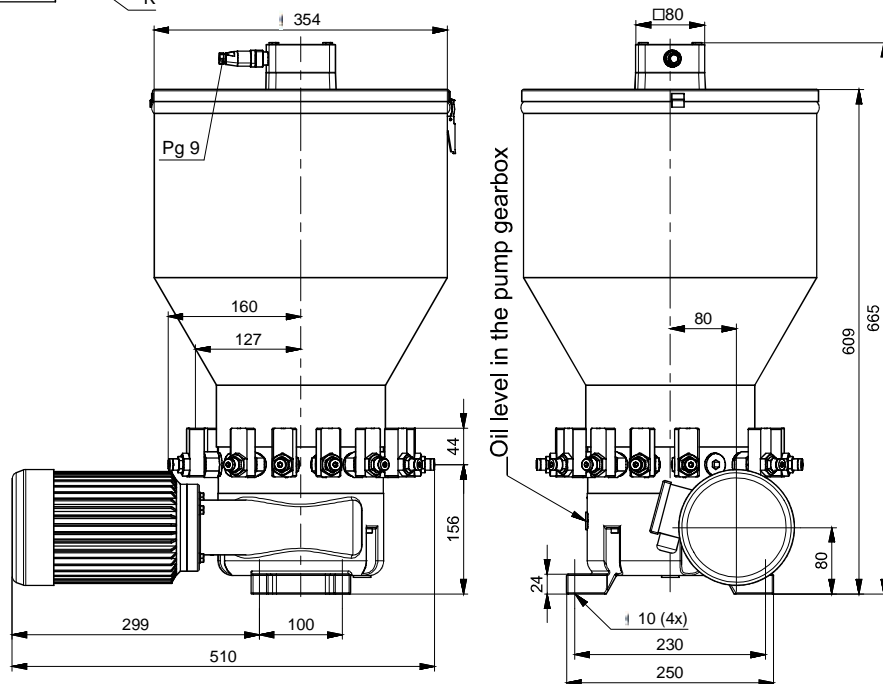
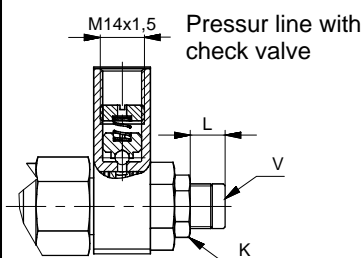
This variable displacement pump is applied for oil and grease lubrication in multiline centralized systems. Displacement of each port can be adjusted separately from minimum to maximum value. It is possible to cut out some of the ports if it is necessary. The number of the ports (from 1 to 15) should be specified in order. The tank volume in standard execution is 30 lit., but other values are also available on request.

The pump is factory adjusted to the maximum flow so the dimension "L" is 16mm, i.e. $0,16 \text{ cm}^3$ per piston stroke. By loosening nut "K" and turning the adjusting screw "V" for 360 clock wise ("L" is reduced for 1mm), the flow rate decreases to $0,025 \text{ cm}^3$ per piston stroke. Minimum flow rate corresponds the "L" value of 12 mm. The flow is reduced to zero if the dimension "L" is 9 mm. After adjusting lock the safety nut "K" again. The outlet ports can be oriented upward or downward.

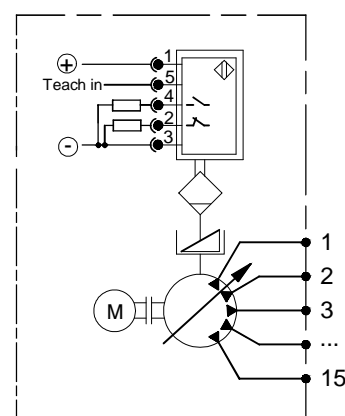
Pump with lubricant level indication have "AU" in code. Ultrasonic level indicator indicate 3 lubricant level in the tank, depending on customer requirements. For lubrication of gear unit of the pump use oil SAE 80. The oil level must be equal to down edge of filling port "A"

Ordering example for the pump with 12 outlet ports and with ultrasonic indicator of lubricant level for flow $3,4 \text{ cm}^3/\text{min}$ per port is:

10-2500L-1-AU/12



SYMBOL



Code	Flow per piston stroke (adjust.) cm^3	Flow per outlet port (adjust.) cm^3/min	Max. Pressure bar	Number of outlet ports	Fluid			Gear box ratio	Electric motor			Ultrasonic level indicator	Tank volume dm^3	Mass kg
					Grease	Oil visc.	Temperat.		Power	Rated speed	Voltage			
					NLGI	mm^2/s	$^{\circ}\text{C}$		kW	rpm	V			
10 - 2500-1	0,04 - 0,16	0,5 - 2,2	350	1 - 15	≤ 3	> 13	$-25 ; +80$	70:1	0,25	980	3x400 V 50Hz	10 do 30V 200 mA 2xPNP NO / NC	30	~33
10 - 2500S-1		0,35 - 1,4						112:1						
10 - 2500L-1		0,85 - 3,4						70:1						



S E R B I A

**36210 VRNJACKA BANJA
Rudjinci 175/A**

**tel/fax: +381 - 36 - 631 - 710
631 - 711**

E-mail: office@fluidotehnic.com

ELECTRIC DRIVEN MULTILINE PUMP (FOR GREASE LUBRICATION SYSTEMS)



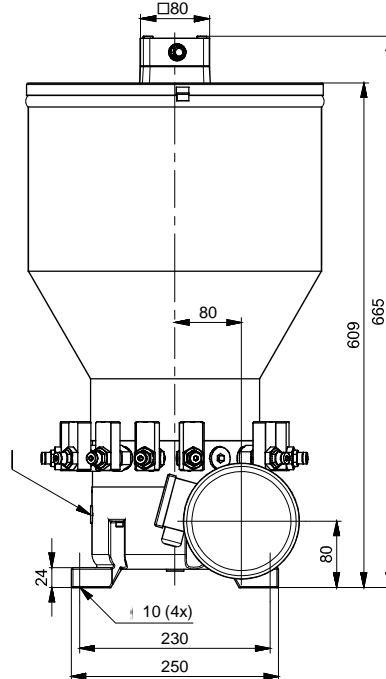
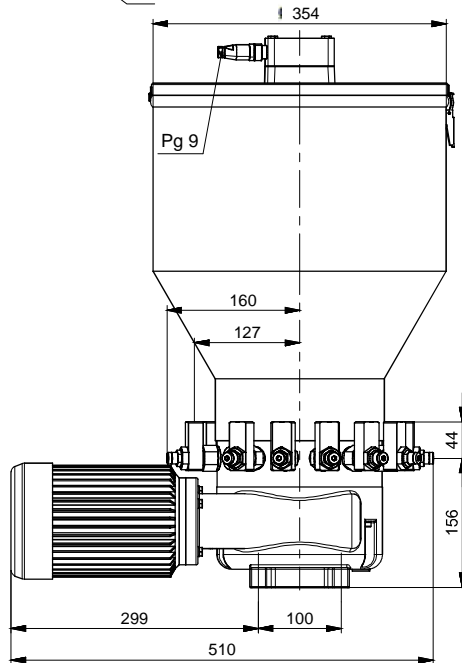
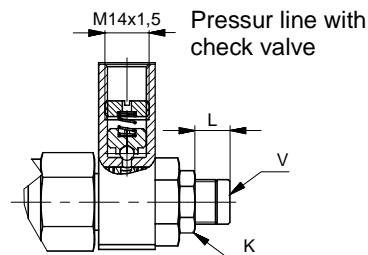
This variable displacement pump is applied for oil and grease lubrication in multiline centralized systems. Displacement of each port can be adjusted separately from minimum to maximum value. It is possible to cut out some of the ports if it is necessary. The number of the ports (from 1 to 16) should be specified in order. The tank volume in standard execution is 30 lit., but other values are also available on request.

The pump is factory adjusted to the maximum flow so the dimension "L" is 16mm, i.e. 0,16 cm³ per piston stroke. By loosening nut "K" and turning the adjusting screw "V" for 360 clock wise ("L" is reduced for 1mm), the flow rate decreases to 0,025 cm³ per piston stroke. Minimum flow rate corresponds the "L" value of 12 mm. The flow is reduced to zero if the dimension "L" is 9 mm. After adjusting lock the safety nut "K" again. The outlet ports can be oriented upward or downward.

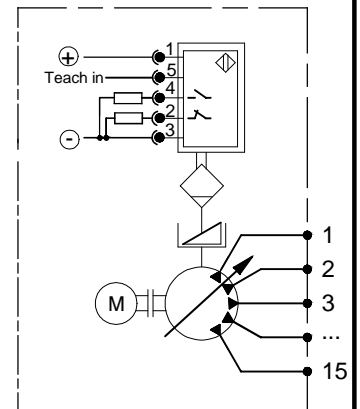
Pump with lubricant level indication have "AU" in code. Ultrasonic level indicator indicate 3 lubricant level in the tank, depending on customer requirements. For lubrication of gear unit of the pump use oil SAE 80. The oil level must be equal to down edge of filling port "A"

Ordering example for the pump with 16 outlet ports and with ultrasonic indicator of lubricant level for flow 3,4 cm³/min per port is:

10-6000L-1-AU/16



SYMBOL



Code	Flow per piston stroke (adjust.) cm ³	Flow per outlet port (adjust.) cm ³ /min	Max. Pressure bar	Number of outlet ports	Fluid			Gear box ratio	Electric motor			Ultrasonic level indicator	Tank volume dm ³	Mass kg
					Grease	Oil visc.	Temperat.		Power	Rated speed	Voltage			
					NLGI	mm ² /s	°C		kW	rpm	V			
10 - 6000-1	0,04 - 0,16	0,5 - 2,2	350	1 - 16	≤3	>13	-25 ; +80	70:1	0,25	980	3x400 V 50Hz	10 do 30V 200 mA 2xPNP NO / NC	30	~33
10 - 6000S-1		0,35 - 1,4						112:1						
10 - 6000L-1		0,85 - 3,4						70:1						



S E R B I A

36210 VRNJACKA BANJA
Rudjinci 175/A

tel/fax: +381 - 36 - 631 - 710
631 - 711

E-mail: office@fluidotehnic.com

ELECTRIC DRIVEN MULTILINE PUMP



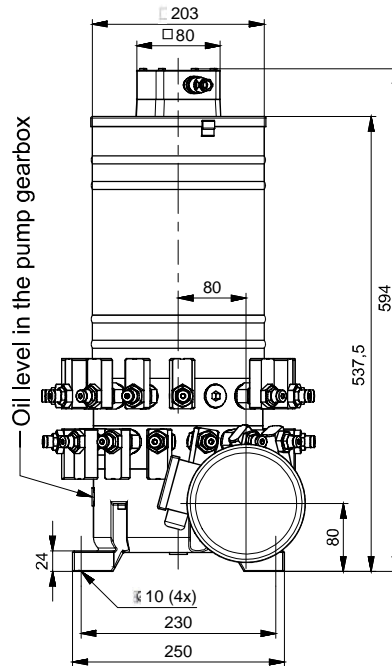
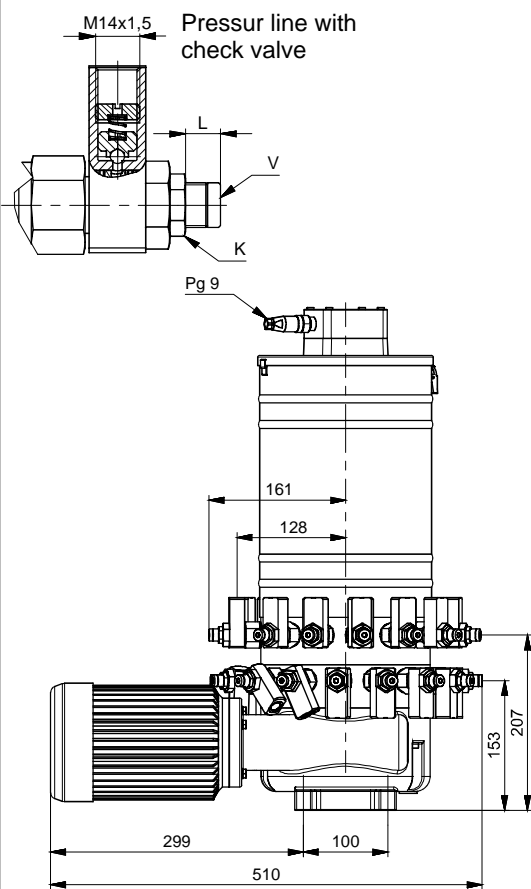
This variable displacement pump is applied for oil and grease lubrication in multiline centralized systems. Displacement of each port can be adjusted separately from minimum to maximum value. It is possible to cut out some of the ports if it is necessary. The number of the ports (from 1 to 30) should be specified in order. The tank volume in standard execution is 10 lit., but other values are also available on request.

The pump is factory adjusted to the maximum flow so the dimension "L" is 16mm, i.e. 0,16 cm³ per piston stroke. By loosening nut "K" and turning the adjusting screw "V" for 360 clock wise ("L" is reduced for 1mm), the flow rate decreases to 0,025 cm³ per piston stroke. Minimum flow rate corresponds the "L" value of 12 mm. The flow is reduced to zero if the dimension "L" is 9 mm. After adjusting lock the safety nut "K" again. The outlet ports can be oriented upward or downward.

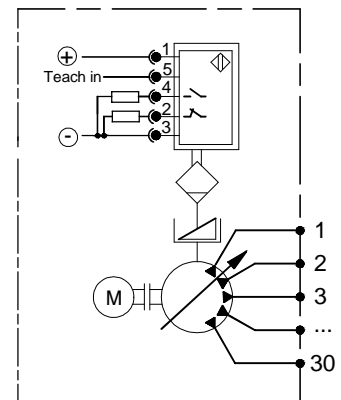
Pump with lubricant level indication have "AU" in code. Ultrasonic level indicator indicate 3 lubricant level in the tank, depending on customer requirements. For lubrication of gear unit of the pump use oil SAE 80. The oil level must be equal to down edge of filling port "A"

Ordering example for the pump with 30 outlet ports and with ultrasonic indicator of lubricant level for flow 3,4 cm³/min per port is:

10-2550S-AU/30



SYMBOL



Code	Flow per piston stroke (adjust.) cm ³	Flow per outlet port (adjust.) cm ³ /min	Max. Pressure bar	Number of outlet ports	Fluid			Gear box ratio	Electric motor			Ultrasonic level indicator	Tank volume dm ³	Mass kg
					Grease	Oil visc.	Temperat.		Power	Rated speed	Voltage			
					NLGI	mm ² /s	°C		kW	rpm	V			
10 - 2550	0,04 - 0,16	0,5 - 2,2	350	1 - 30	≤3	>13	-25 ; +80	70:1	0,25	980	3x400 V 50Hz	10 do 30V 200 mA 2xPNP NO / NC	10	~36
10 - 2550S		0,35 - 1,4						112:1						
10 - 2550L		0,85 - 3,4						70:1						



SERBIA

36210 VRNJACKA BANJA

Rudjinci 175/A

tel/fax: +381 - 36 - 631 - 710

631 - 711

E-mail: office@fluidotehnic.com

ELECTRIC DRIVEN MULTILINE PUMP



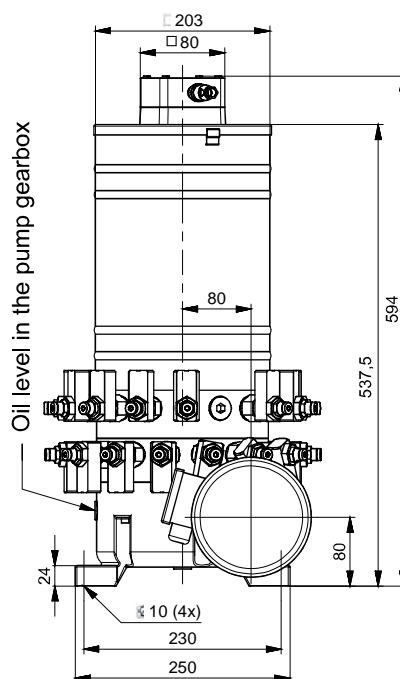
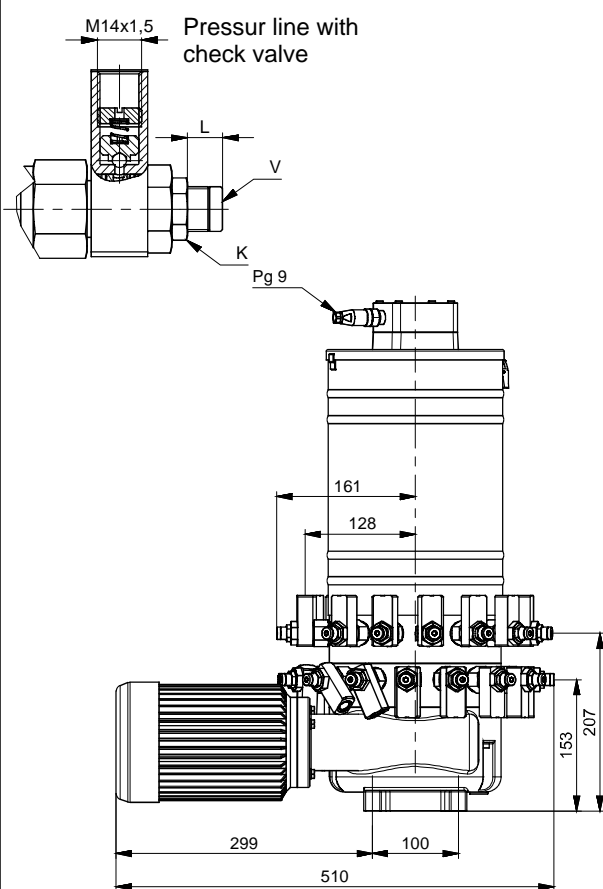
This variable displacement pump is applied for oil and grease lubrication in multiline centralized systems. Displacement of each port can be adjusted separately from minimum to maximum value. It is possible to cut out some of the ports if it is necessary. The number of the ports (from 1 to 32) should be specified in order. The tank volume in standard execution is 10 lit., but other values are also available on request.

The pump is factory adjusted to the maximum flow so the dimension "L" is 16mm, i.e. 0,16 cm³ per piston stroke. By loosening nut "K" and turning the adjusting screw "V" for 360 clock wise ("L" is reduced for 1mm), the flow rate decreases to 0,025 cm³ per piston stroke. Minimum flow rate corresponds the "L" value of 12 mm. The flow is reduced to zero if the dimension "L" is 9 mm. After adjusting lock the safety nut "K" again. The outlet ports can be oriented upward or downward.

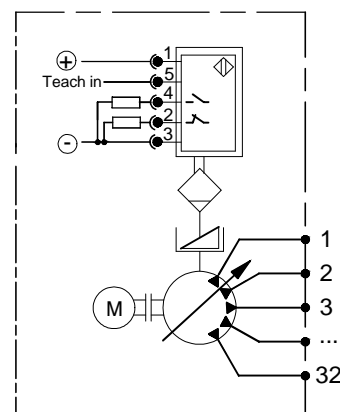
Pump with lubricant level indication have "AU" in code. Ultrasonic level indicator indicate 3 lubricant level in the tank, depending on customer requirements. For lubrication of gear unit of the pump use oil SAE 80. The oil level must be equal to down edge of filling port "A"

Ordering example for the pump with 32 outlet ports and with ultrasonic indicator of lubricant level for flow 1,4 cm³/min per port is:

10-6050S-AU/32



SYMBOL



Code	Flow per piston stroke (adjust.) cm ³	Flow per outlet port (adjust.) cm ³ /min	Max. Pressure bar	Number of outlet	Fluid			Gear box ratio	Electric motor			Ultrasonic level indicator	Tank volume dm ³	Mass kg
					Grease	Oil visc.	Temperat.		Power	Rated speed	Voltage			
					NLGI	mm ² /s	°C		kW	rpm	V			
10 - 6050	0,04 - 0,16	0,5 - 2,2	350	1 - 32	≤3	>13	-20 ; +80	70:1	0,25	980	3x400 V 50Hz	10 do 30V 200 mA 2xPNP NO/ NC	10	~36
10 - 6050S		0,35 - 1,4						112:1						
10 - 6050L		0,85 - 3,4						70:1						



SERBIA

36210 VRNJACKA BANJA
Rudjinci 175/A

tel/fax: +381 - 36 - 631 - 710
631 - 711

E-mail: office@fluidotehnic.com

ELECTRIC DRIVEN MULTILINE PUMP



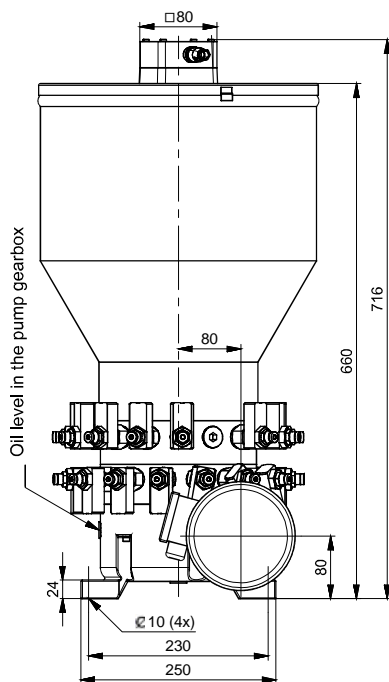
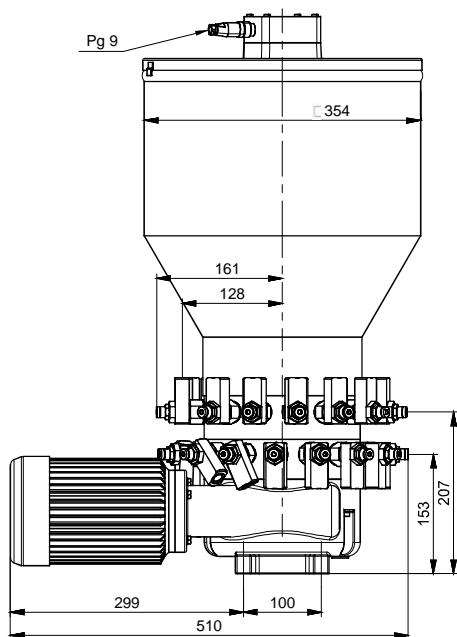
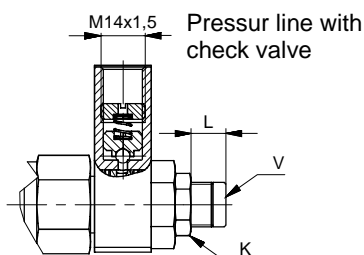
This variable displacement pump is applied for oil and grease lubrication in multiline centralized systems. Displacement of each port can be adjusted separately from minimum to maximum value. It is possible to cut out some of the ports if it is necessary. The number of the ports (from 1 to 30) should be specified in order. The tank volume in standard execution is 10 lit., but other values are also available on request.

The pump is factory adjusted to the maximum flow so the dimension "L" is 16mm, i.e. 0,16 cm³ per piston stroke. By loosening nut "K" and turning the adjusting screw "V" for 360 clock wise ("L" is reduced for 1mm), the flow rate decreases to 0,025 cm³ per piston stroke. Minimum flow rate corresponds the "L" value of 12 mm. The flow is reduced to zero if the dimension "L" is 9 mm. After adjusting lock the safety nut "K" again. The outlet ports can be oriented upward or downward.

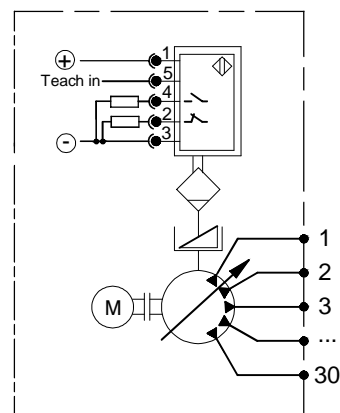
Pump with lubricant level indication have "AU" in code. Ultrasonic level indicator indicate 3 lubricant level in the tank, depending on customer requirements. For lubrication of gear unit of the pump use oil SAE 80. The oil level must be equal to down edge of filling port "A"

Ordering example for the pump with 18 outlet ports and with ultrasonic indicator of lubricant level for flow 3,4 cm³/min per port is:

10-2550L-1-AU/18



SYMBOL



Code	Flow per piston stroke (adjust.) cm ³	Flow per outlet port (adjust.) cm ³ /min	Max. Pressure bar	Number of outlet	Fluid			Gear box ratio	Electric motor			Ultrasonic level indicator	Tank volume dm ³	Mass kg
					Grease	Oil visc.	Temperat.		Power	Rated speed	Voltage			
					NLGI	mm ² /s	°C		kW	rpm	V			
10 - 2550-1	0,04 - 0,16	0,5 - 2,2	350	1 - 30	≤3	>13	-25 ; +80	70:1	0,25	980	3x400 V 50Hz	10 do 30V 200 mA 2xPNP NO / NC	30	~42
10 - 2550S-1		0,35 - 1,4						112:1						
10 - 2550L-1		0,85 - 3,4						70:1						

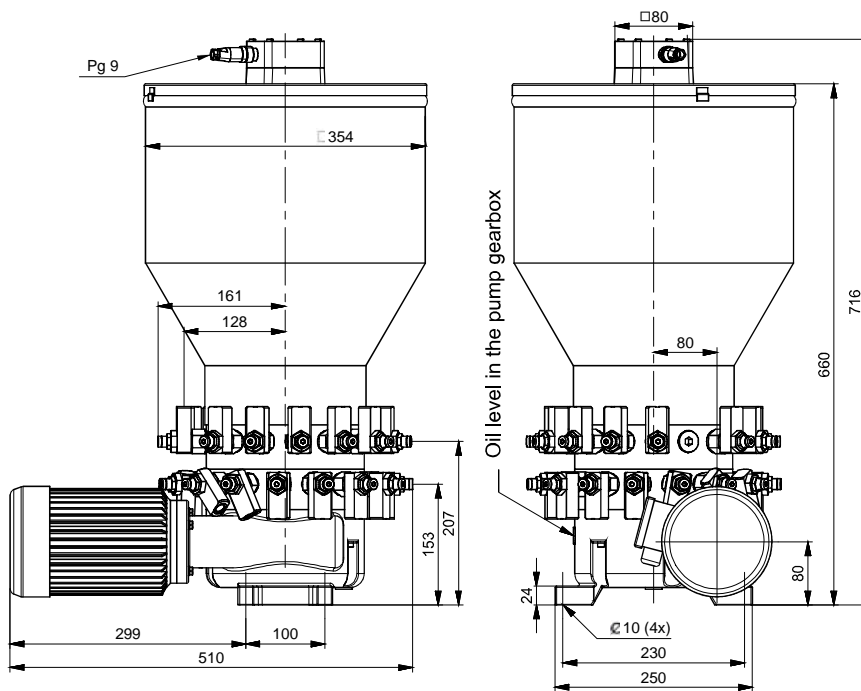


S E R B I A
 36210 VRNJACKA BANJA
 Rudjinci 175/A
 tel/fax: +381 - 36 - 631 - 710
 631 - 711
 E-mail: office@fluidotehnic.com

A blue industrial hopper with a motorized base and multiple brass outlets. The hopper has a cylindrical top section with a label, a conical middle section, and a base with a motor and numerous brass outlets.

Ordering example for the pump with 18 outlet ports and with ultrasonic indicator of lubricant level for flow $3,4 \text{ cm}^3/\text{min}$ per port is:

Pressur line with
check valve



The diagram shows a teach pendant with a motor. The pendant has a diamond-shaped button labeled 'Teach in' and a circular button labeled 'M'. The motor is connected to the pendant via a cable. The cable has multiple conductors labeled 1, 2, 3, ..., 32. The pendant is connected to a power source (indicated by a circle with a plus sign) and a ground (indicated by a circle with a minus sign).

Code	Flow per piston stroke (adjust.)	Flow per outlet port (adjust.)	Max. Pressure	Number of outlet ports	Fluid			Gear box ratio	Electric motor			Ultrasonic level indicator	Tank volume	Mass
	cm ³	cm ³ /min			bar		Grease		Oil visc.	Temperat.	Power			
							NLGI		mm ² /s	°C	kW		rpm	V
10 - 6050-1	0,04 - 0,16	0,5 - 2,2	350	1 - 32	≤3	>13	-25 ; +80	70:1	0,25	980	3x400 V 50Hz	10 do 30V 200 mA 2xPNP NO / NC	30	~43
10 - 6050S-1		0,35 - 1,4						112:1						
10 - 6050L-1		0,85 - 3,4						70:1						



E-mail: office@fluidotehnic.com