

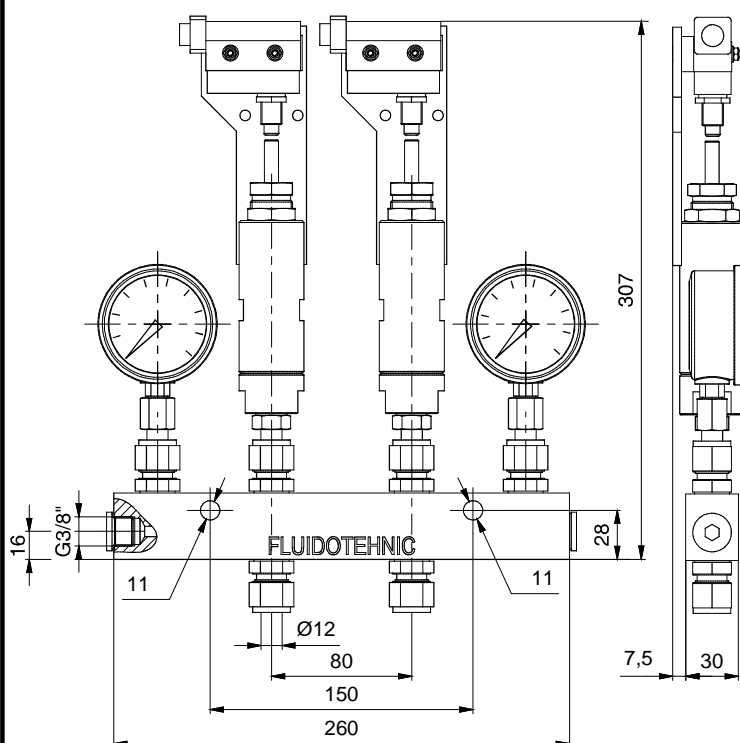
CONTROL DEVICE (FOR TWO-LINE GREASE LUBRICATION SYSTEMS)



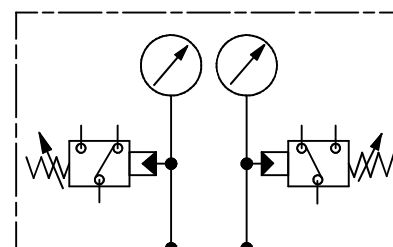
Control device 10-0140 is applied for two-line grease lubrication systems. It is capable for operation in most hard conditions such as in surface exploitation plants, mines, iron plants and cement works.

Adjusting range of the pressure switches is from 50 to 400bar. When the pressure in the first line reaches the given setting, pressure switch produce the electrical signal. Then, in the system with electric driven distributor, the pump is switching off, electric motor of distributor is switching on and moving the valve to another position. Then the another lubrication cycle started through the second line.

In the system with hydraulic distributing valve, switching is performed by distributing valve. Control unit only indicates that required pressure has been reached at a suitable point (usually at the end of line), before the end of the lubrication cycle.



SYMBOL:



Ordering code	10 - 0140	10 - 0140/1
Fluid	Oil viscosity	>13 mm ² /s
	Grease.	NLGI <3
	Temperature	-30 ; +80 °C
Operating pressure	50 - 200 bar	100 - 400 bar
Connecting ports	SRPS M.B.6.716 T12 (G3/8")	
Electric indicator	max. 220 V 5 A	
Mass	5,8 kg	



S E R B I A
 36210 VRNJACKA BANJA
 Rudjinci 175/A
 tel/fax: +381 - 36 - 631 - 710
 631 - 711
 E-mail: office@fluidotehnic.com