

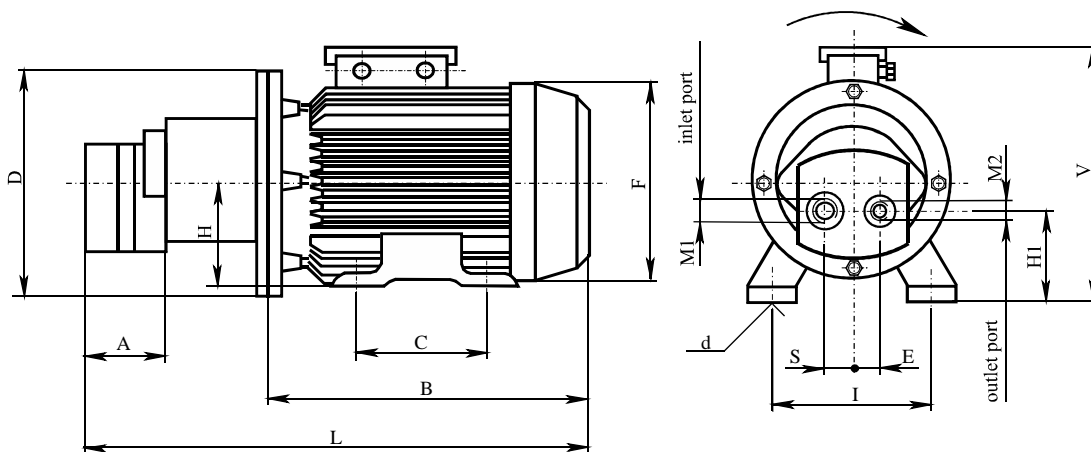
POWER UNIT FOR OIL LUBRICATION



The main parts of the unit are low-pressure gear pump, bell housing and electric motor. The pump shaft and driving shaft of electric motor are connected by elastic coupling. The pump is designed to flawlessly operate with high-density hypoid oil as well as low density oil. It is very resistant to metal particles which may occurs in oil due to wearing of the gears. Because of its robust design, the unit is applicable in plants with hardest working conditions, such as iron plants, cement works, surface mines, etc. The mounting holes of the unit are on the electric motor base. On supplied two types of power units:

- without relief valve
- with relief valve

Units of the other dimensions, hydraulic and electric characteristics are available on request.



CODE	L	A	B	H	H1	I	C	V	D	F	S	d	E	M ₂	M ₁
10 - 0200	417	60	257	90	74	140	100	211	200	170	18	10	18	M16x1,5	M18x1,5
10 - 0210	427	70	257	90	74	140	100	211	200	170	18	10	18	M18x1,5	M27x2
10 - 0215	444	72	257	90	67,5	140	100	211	200	170	26	10	26	M26x1,5	M33x2
10 - 0217	492	82	295	100	77,5	160	140	257	250	193	27,5	12	26	M26x1,5	M42x2
10 - 0220	510	100	295	100	77,5	160	140	257	250	193	27,5	12	26	M33x2	M42x2

ORDERING CODE		10 - 0200	10 - 0210	10 - 0215	10 - 0217	10 - 0220
Flow rate	(dm ³ /min)	10	20	40	60	100
Max operating pressure	(bar)	20	20	20	15	15
Admissible underpressure in the suction line	(bar)	0,25				
Admissible overpressure in the suction line	(bar)	0,5				
Fluid	Oil viscosity	(mm ² /s) 13 - 800				
	Temperature	(°C) -25 ; +80				
Electric motor	Power	1,1	1,1	1,5	2,20	3,00
	Speed	1370	1370	1390	1410	1380
	Voltage	(V) 3x400V 50Hz				
	insulation	IP 54 klasa E				
	Ambient temperature	(°C) -25 ; +60				
Mass	(kg)	20	20	23	30	36,5



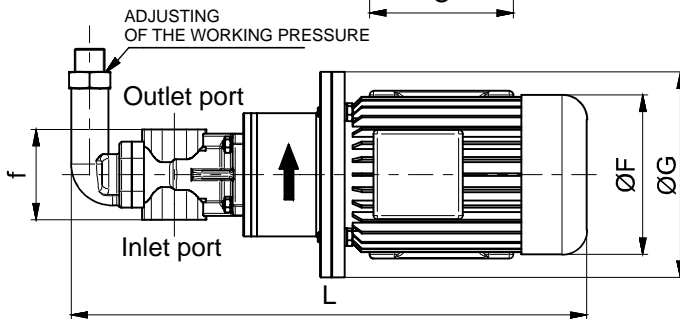
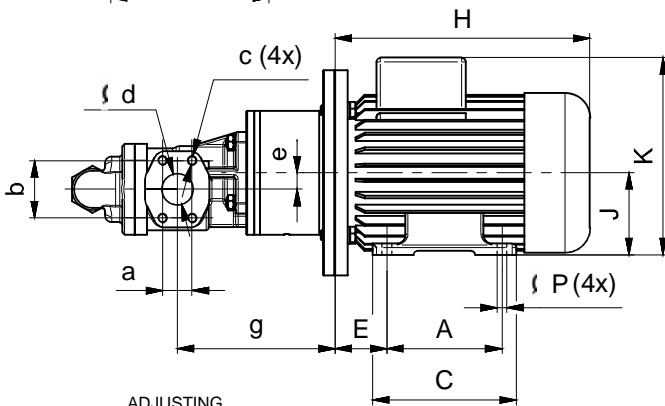
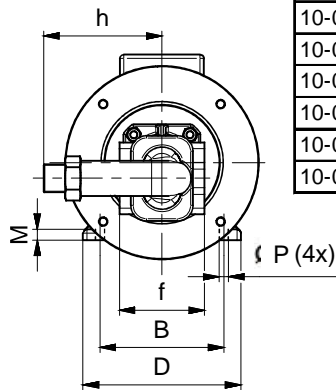
S E R B I A

36210 VRNJACKA BANJA
Rudjinci 175/A

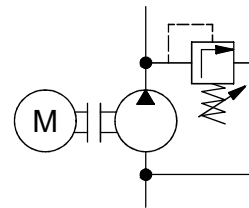
tel/fax: +381 - 36 - 631 - 710
631 - 711

E-mail: office@fluidotehnic.com

Ordering code	Operating pressure (bar)	Flow (dm ³ /min)	Fluid	Code pump	Electric motor (3x400V, 50 Hz)	Ambient temperature	Mass (kg)
10-0190 4-1000-15	0-16	3,3	oil viscosity 10 do 1500 mm ² /s	KF 4	0,18 kW, 870 rpm	-30 to +90°C	10
10-0190 6-1000-15		5,1		KF 6	0,25 kW, 880 rpm		11
10-0190 12-1000-15		10,2		KF 12	0,55 kW, 900 rpm		14,5
10-0190 20-1000-15		16,3		KF 20	0,75 kW, 900 rpm		22,3
10-0190 32-1000-15		26		KF 32	1,1 kW, 900 rpm		25,3
10-0190 40-1000-15		33		KF 40	1,5 kW, 930 rpm		34,3
10-0190 63-1000-15		51		KF 63	2,2 kW, 930 rpm		37,3
10-0190 80-1000-15		65		KF 80	2,2 kW, 940 rpm		37,3
10-0190 112-1000-15		93		KF 112	4 kW, 950 rpm		58
10-0190 150-1000-15		119		KF 150	5,5 kW, 950 rpm		64
10-0190 180-1000-15		145		KF 180	5,5 kW, 950 rpm		66,6



SIMBOL:



Ordering code	A	B	C	D	E	F	G	H	J	K	L	M	P	a	b	c	d	e	f	g	h
10-0190 4-1000-15	90	112	109	137	45	139	160	205	71	180	425	11	7	22,2	47,6	M10	19,5	14,2	100	134	100
10-0190 6-1000-15																					
10-0190 12-1000-15	100	125	125	160	50	156	200	230	80	206	475	13	8	26,2	52,4	25	38	20	110	184	
10-0190 20-1000-15																					
10-0190 32-1000-15	125	140	155	175	56	176	200	275	90	222	512	13	9	35,7	69,9	M12	38	20	110	204	
10-0190 40-1000-15	184																				
10-0190 63-1000-15	140	160	170	200	63	194	250	305	100	240	637	12	11	35,7	69,9	M12	38	20	110	220	
10-0190 80-1000-15																					
10-0190 112-1000-15	178	216	218	260	89	258	300	435	132	300	841	16	12	42,9	77,8	M16	50,8	23,7	130	246	
10-0190 150-1000-15														861	150		264				
10-0190 180-1000-15														877	150		274				



SERBIA
 36210 VRNJACKA BANJA
 Rudjinci 175/A
 tel/fax: +381 - 36 - 631 - 710
 631 - 711
 E-mail: office@fluidotehnic.com