

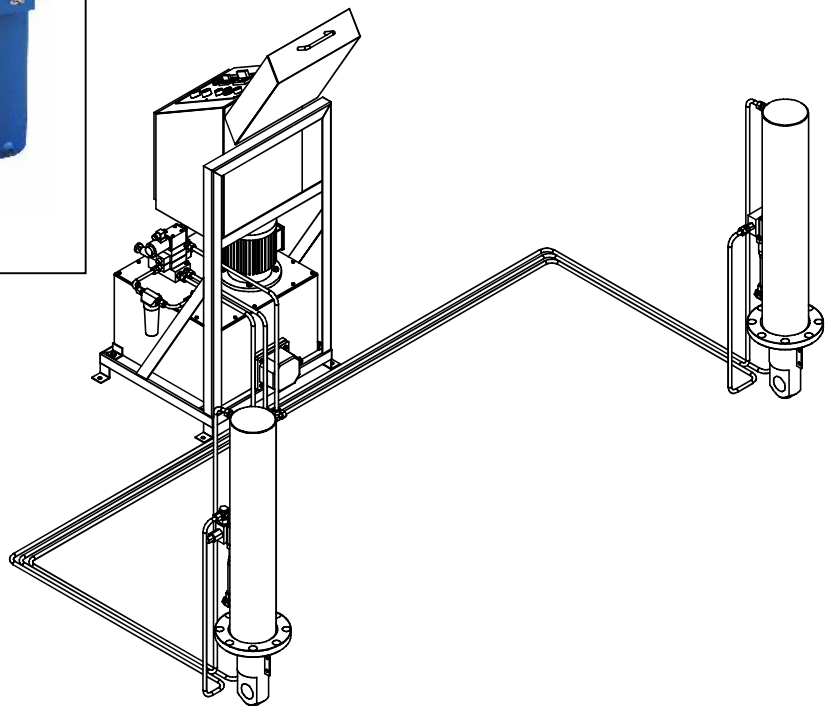
TANDEM ACTUATOR



Tandem actuator is applied for synchronized lifting and downing of the cargo and holding it on the requested level. Speed of the cylinders movement is adjustable and independent of the load. Versions with manually and electric remote control are available. Automatic control with level indicator is available on customer request.

For low temperature operation device is equipped with heater and thermal switch.

Installation dimensions, load capacity, speed, and stroke of the cylinder are customized under customer request.



Ordering code		90 - 0210
Maximum operating pressure		140 bar
Mineral oil		HIDROL HD-46
Working temperature		- 30 ; +50 ⁰ C
Tank volume		45 dm ³
Flow rate		2,4 dm ³ /min
Cylinder stroke		650 mm
Cylinder force for maximum pressure		2x17 000/2x13 000 daN
Electric motor	Power	1,1 kW
	Voltage	380 V/50 Hz
	speed	1370 rpm
Oil heater		220 V, 1000 W
Thermostat		- 30 do +30 ⁰ C
Mass		270 kg



S E R B I A

36210 VRNJACKA BANJA

Rudjinci 175/A

tel/fax: +381 - 36 - 631 - 710
631 - 711

E-mail : office@fluidotehnic.com