

HYDRAULIC POWER PACKS



Hydraulic power packs

Hydraulic power units are drive aggregates that electrical energy converts to hydraulic and so, over cylinder and hydro-motor, perform corresponding mechanical linear or rotational work.

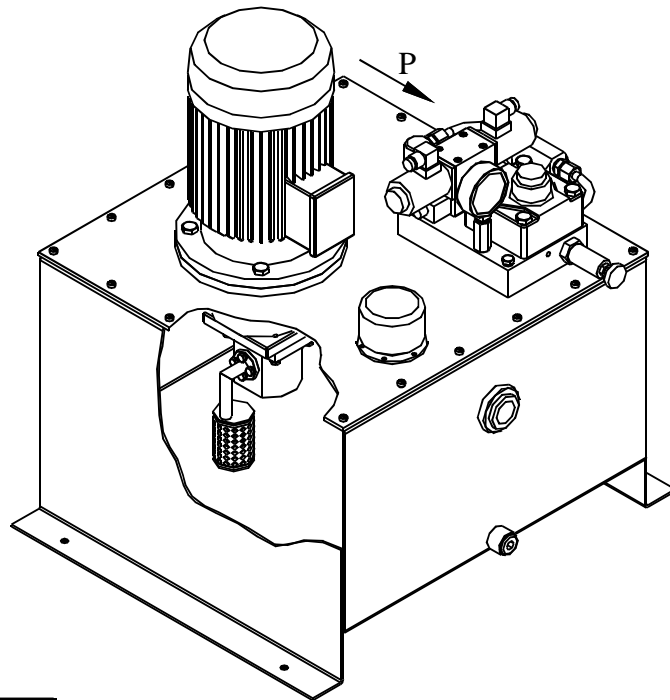
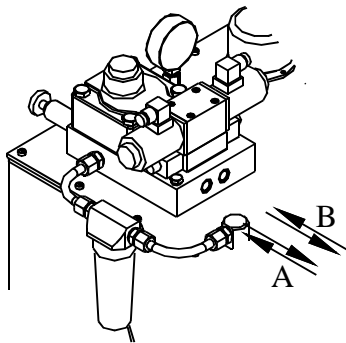
Hydraulic power units are designed as a compact unit consisting of:

- Reservoir
- Electric motor coupled with hydraulic pump
- Suction filter
- Pressure line filter
- Safety valve
- Visual fluids level indicator
- Filling plug with air filter

Types and nominal sizes of components are chosen according to the required technical characteristics of aggregates.

On the customer request power units with additional drive and control elements are available, such as: valves (flow and pressure control, check valves, distributing valves) single mounting or composed in blocks, hydraulic accumulators, oil level indicators, temperature electric indicators, heaters, coolers etc.

VIEW "P"

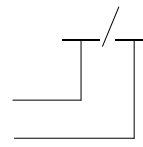


| | |
|------------------------|--------------------------------|
| Max operating pressure | 160 (300) bar * |
| Mineral oil viscosity | 10 - 400 mm ² /s |
| Operating temperature | - 20 ; +50 ⁰ C |
| Tank volume | 20 - 250 dm ³ |
| Pump displacement | up to 160 dm ³ /min |

* 160 bar Gear pumps
300 bar Piston pumps

ORDERING CODE

Operating pressure
Pump displacement



FT FLUIDOTEHNIC

SERBIA

36210 VRNJACKA BANJA

Rudjinci 175/A

tel/fax:

+381 - 36 - 631 - 710

631 - 711

E-mail: office@fluidotehnic.com