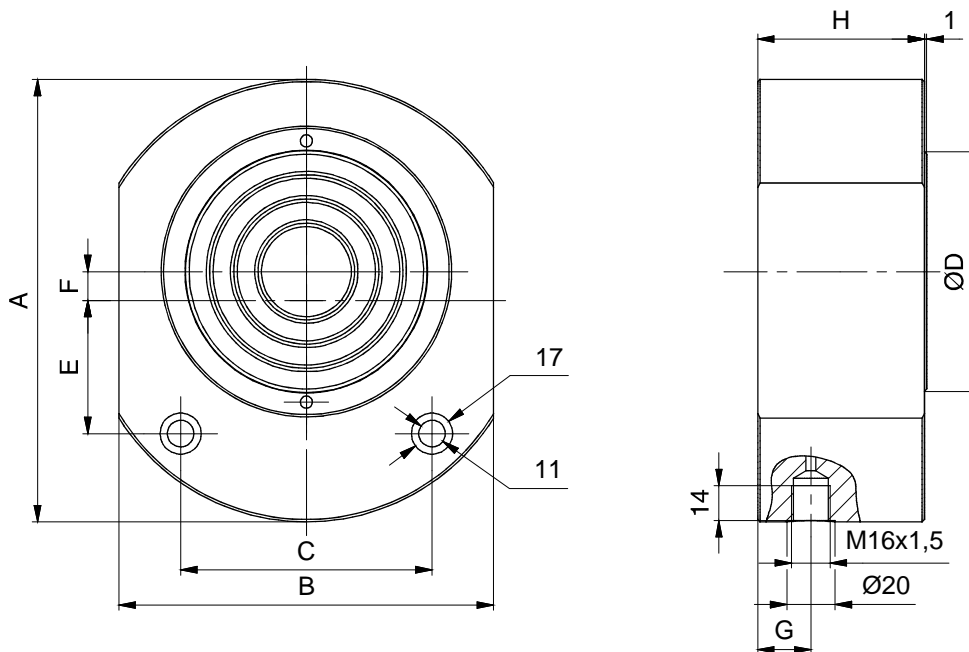


# LOW HEIGHTS CYLINDERS



Low heights cylinders are intended for achieving great power with small strokes. Due to the small dimensions they can be installed in places where space is very cramped. Cylinders are single-acting and strictly must be taken care that declared stroke is not exceeded, otherwise cylinder and seals can be damaged. Their robust construction, precise production and high quality sealing material are the parameters for the long life of device. The construction is determined. Design of the cylinder allows the piston back to the starting position due to the load.

On the customer request cylinders may have other strokes and load capacity.



Type	Load capacity (daN)	Stroke	D	A	B	C	E	F	G	H	Mass (kg)
JC-P 6/10	6.300	10	40	92	71	50	24	11	22,5	45	3
JC-P 8/10	7.900	10	45	106	80	58	25	12,5	22,5	45	4,5
JC-P 10/10	9.800	10	50	120	90	68	25	15	22,5	47	6
JC-P 25/15	25.100	15	80	150	126	85	35	12	22,5	64	11
JC-P 40/15	39.200	15	100	183	155	104	55	12	22,5	69	13
JC-P 100/15	100.500	15	160	265	240	180	70	10	30	90	19
JC-P 160/15	157.000	15	200	330	310	310	84	10	43	112	36

Fluid	mineral oil	
	viscosity	20 do 400 mm <sup>2</sup> /s
	temperature	-20 do +80 °C
Working pressure max		500 bar
Piston speed		max 0,01 m/s
Load direction		along the cylinder axis



**SERBIA**

36210 VRNJACKA BANJA

Rudjinci 175/A

tel/fax: +381 - 36 - 631 - 710

631 - 711

E-mail: office@fluidotehnic.com